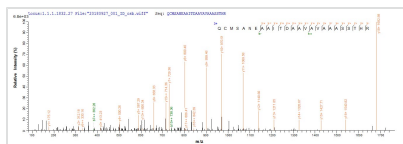




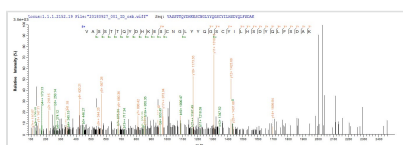
Recombinant Vaccinia virus Protein A33 (VACWR156), partial

| | |
|--------------------------|---|
| Product Code | CSB-YP303065VAI |
| Abbreviation | Recombinant Vaccinia virus VACWR156 protein, partial |
| Storage | The shelf life is related to many factors, storage state, buffer ingredients, storage temperature and the stability of the protein itself. Generally, the shelf life of liquid form is 6 months at -20°C/-80°C. The shelf life of lyophilized form is 12 months at -20°C/-80°C. |
| Uniprot No. | P68617 |
| Product Type | Recombinant Protein |
| Immunogen Species | Vaccinia virus (strain Western Reserve) (VACV) (Vaccinia virus (strain WR)) |
| Purity | ≥ 85% as determined by SDS-PAGE. |
| Sequence | VRLNQCMSANEAAITDAAVAVAAASSTHRKVASSTTQYDHKESCNGLYYQGS CYILHSDYQLFSDAKANCTAESSTLPNKSDVLITWLIDYVEDTWGSDGNPITKT TSDYQSDVSQEVRKYFCVKTMN |
| Research Area | Others |
| Source | Yeast |
| Target Names | VACWR156 |
| Protein Names | Recommended name: Protein A33 |
| Expression Region | 57-185aa |
| Notes | Repeated freezing and thawing is not recommended. Store working aliquots at 4°C for up to one week. |
| Tag Info | N-terminal 6xHis-tagged |
| Mol. Weight | 16.2 kDa |
| Protein Length | Partial |

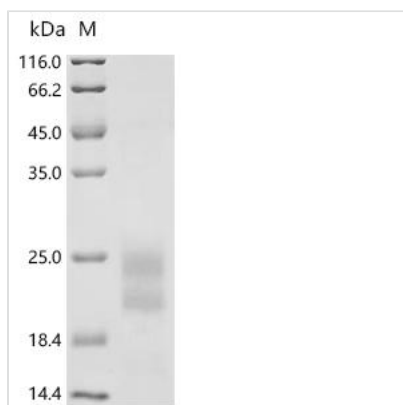
Image



Based on the SEQUEST from database of Yeast host and target protein, the LC-MS/MS Analysis result of CSB-YP303065VAI could indicate that this peptide derived from Yeast-expressed Vaccinia virus (strain Western Reserve) (VACV) (Vaccinia virus (strain WR)) VACWR156.



Based on the SEQUEST from database of Yeast host and target protein, the LC-MS/MS Analysis result of CSB-YP303065VAI could indicate that this peptide derived from Yeast-expressed Vaccinia virus (strain Western Reserve) (VACV) (Vaccinia virus (strain WR)) VACWR156.



(Tris-Glycine gel) Discontinuous SDS-PAGE (reduced) with 5% enrichment gel and 15% separation gel.

Reconstitution

We recommend that this vial be briefly centrifuged prior to opening to bring the contents to the bottom. Please reconstitute protein in deionized sterile water to a concentration of 0.1-1.0 mg/mL. We recommend to add 5-50% of glycerol (final concentration) and aliquot for long-term storage at -20°C/-80°C. Our default final concentration of glycerol is 50%. Customers could use it as reference.

Shelf Life

The shelf life is related to many factors, storage state, buffer ingredients, storage temperature and the stability of the protein itself. Generally, the shelf life of liquid form is 6 months at -20°C/-80°C. The shelf life of lyophilized form is 12 months at -20°C/-80°C.