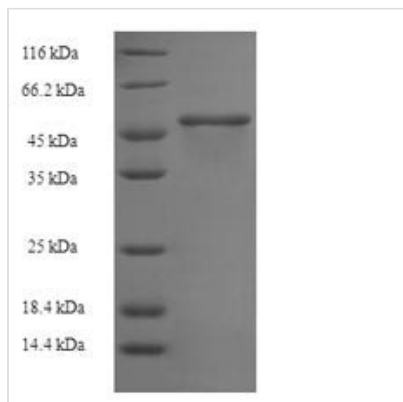




Recombinant Juniperus ashei Pectate lyase 1

Product Code	CSB-EP305864JAN
Relevance	Has low pectate lyase activity.
Abbreviation	Recombinant Juniperus ashei Pectate lyase 1 protein
Storage	The shelf life is related to many factors, storage state, buffer ingredients, storage temperature and the stability of the protein itself. Generally, the shelf life of liquid form is 6 months at -20°C/-80°C. The shelf life of lyophilized form is 12 months at -20°C/-80°C.
Uniprot No.	P81294
Product Type	Recombinant Protein
Immunogen Species	Juniperus ashei (Ozark white cedar)
Purity	≥ 90% as determined by SDS-PAGE.
Sequence	DNPIDSCWRGDSNWDQNRMKLADCAVGFSGSSTMGGKGGDFYTVTSTDDNP VNPTPGTLRYGATREKALWIIFSQNMNIKLMPLYVAGHKIDGRGADVHLGN GGPCLFMRKVSHVILHSLHIHGCVLGDVLSVESIGVEPVHAQDGDITMR NVTNAWIDHNSLSDCSDGLIDVTLGSTGITISNNHFFNHKVMMLGHDDTYDDD KSMKVTVAFNQFGPNAGQRMPRARYGLVHVANNYDPWNIYAIGGSSNPTIL SEGNSFTAPSESYKKEVTKRIGCESPSACANWVWRSTRDAFINGAYFVSSGK TEETNIYNSNEAFKVENGNAAPQLTKNAGVVT
Research Area	Others
Source	E.coli
Expression Region	22-367aa
Notes	Repeated freezing and thawing is not recommended. Store working aliquots at 4°C for up to one week.
Tag Info	N-terminal 6xHis-SUMO-tagged
Mol. Weight	53.6kDa
Protein Length	Full Length of Mature Protein

Image



(Tris-Glycine gel) Discontinuous SDS-PAGE (reduced) with 5% enrichment gel and 15% separation gel.



Reconstitution

We recommend that this vial be briefly centrifuged prior to opening to bring the contents to the bottom. Please reconstitute protein in deionized sterile water to a concentration of 0.1-1.0 mg/mL. We recommend to add 5-50% of glycerol (final concentration) and aliquot for long-term storage at -20°C/-80°C. Our default final concentration of glycerol is 50%. Customers could use it as reference.

Shelf Life

The shelf life is related to many factors, storage state, buffer ingredients, storage temperature and the stability of the protein itself.

Generally, the shelf life of liquid form is 6 months at -20°C/-80°C. The shelf life of lyophilized form is 12 months at -20°C/-80°C.