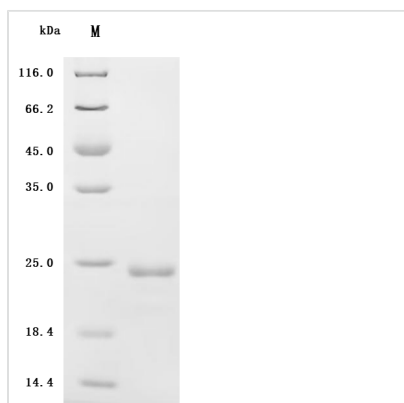




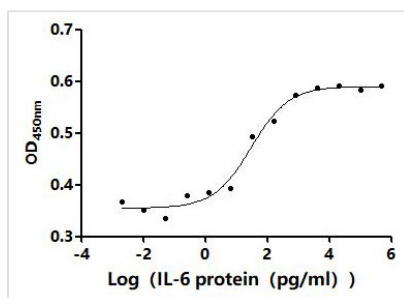
Recombinant Human Interleukin-6 (IL6) (Active)

Product Code	CSB-YP011664HU
Abbreviation	Recombinant Human IL6 protein (Active)
Storage	The shelf life is related to many factors, storage state, buffer ingredients, storage temperature and the stability of the protein itself. Generally, the shelf life of liquid form is 6 months at -20°C/-80°C. The shelf life of lyophilized form is 12 months at -20°C/-80°C.
Uniprot No.	P05231
Form	Lyophilized powder
Storage Buffer	Lyophilized from a 0.2 μm filtered PBS, 6% Trehalose, pH 7.4
Product Type	Recombinant Protein
Immunogen Species	Homo sapiens (Human)
Biological Activity	The ED50 as determined by the dose-dependent stimulation of the proliferation of human TF-1 cells is 58 - 295 pg/mL.
Purity	Greater than 95% as determined by SDS-PAGE.
Sequence	VPPGEDSKDVAAPHRQPLTSSERIDKQIRYILDGISALRKETCNKSNMCESSKE ALAENNLNLPKMAEKDGCQSGFNEETCLVKIITGLLEFEVYLEYLQNRFFESSE EQARAVQMSTKVLIQFLQKKAKNLDAITTPDPTTNASLLTKLQAQNQWLQDMT THLILRSFKEFLQSSLRALRQM
Source	Yeast
Target Names	IL6
Expression Region	30-212aa
Notes	Repeated freezing and thawing is not recommended. Store working aliquots at 4°C for up to one week.
Tag Info	N-terminal 6xHis-tagged
Mol. Weight	22.8 kDa
Protein Length	Full Length of Mature Protein

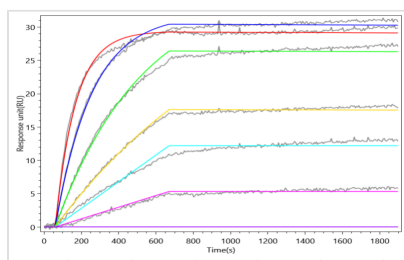
Image



(Tris-Glycine gel) Discontinuous SDS-PAGE (reduced) with 5% enrichment gel and 15% separation gel.


Activity

The ED₅₀ as determined by the dose-dependent stimulation of the proliferation of human TF-1 cells is 58 - 295 pg/mL.



IL6 (Siltuximab) Recombinant Monoclonal Antibody (CSB-RA011664MA1HU) captured on Protein A Chip can bind Recombinant Human IL-6 protein with an affinity constant of 0.135 nM as detected by MetaSPR Assay (WeSPRTM 200).

Endotoxin

Less than 1.0 EU/ug as determined by LAL method.

Reconstitution

We recommend that this vial be briefly centrifuged prior to opening to bring the contents to the bottom. Please reconstitute protein in deionized sterile water to a concentration of 0.1-1.0 mg/mL. We recommend to add 5-50% of glycerol (final concentration) and aliquot for long-term storage at -20°C/-80°C. Our default final concentration of glycerol is 50%. Customers could use it as reference.

Shelf Life

The shelf life is related to many factors, storage state, buffer ingredients, storage temperature and the stability of the protein itself.

Generally, the shelf life of liquid form is 6 months at -20°C/-80°C. The shelf life of lyophilized form is 12 months at -20°C/-80°C.