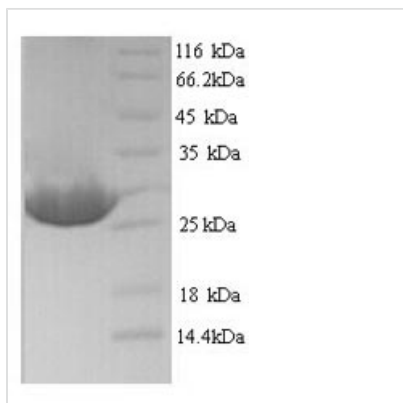




Recombinant *Silene chaledonica* Ribosome-inactivating protein lychnin

Product Code	CSB-YP307648LKN
Relevance	Ribosome-inactivating protein of type 1, inhibits protein synthesis in animal cells. Inhibits cell-free translation in rabbit reticulocyte lysate system with an IC50 of 0.17 nM.
Abbreviation	Recombinant <i>Silene chaledonica</i> Ribosome-inactivating protein lychnin protein
Storage	The shelf life is related to many factors, storage state, buffer ingredients, storage temperature and the stability of the protein itself. Generally, the shelf life of liquid form is 6 months at -20°C/-80°C. The shelf life of lyophilized form is 12 months at -20°C/-80°C.
Uniprot No.	P85101
Product Type	Recombinant Protein
Immunogen Species	<i>Silene chaledonica</i> (Maltese-cross) (<i>Lychnis chaledonica</i>)
Purity	≥ 90% as determined by SDS-PAGE.
Sequence	RPSWTVDSDSAKYSSFLDSLREEFGRGTPKVCNIPVTKKANNDKFLVNLVLP FNRNTITLAFRASDAYLVGFQDRDSKTNKLRANFFSDEYRALSGKYKSIFTDAE VLAPALPCASTYTDLQNKAGVSREKLSLGVSSLQTAFTAVYGKVFTGKNVAKF ALISIQMVAEAARFKYIEDQVINRGMYSSEAGARITLLENNWSKISEQYHKSCK LGGGQFTEEMKLGLLLYN
Research Area	Others
Source	Yeast
Protein Names	Recommended name: Ribosome-inactivating protein lychnin EC= 3.2.2.22
Expression Region	1-234aa
Notes	Repeated freezing and thawing is not recommended. Store working aliquots at 4°C for up to one week.
Tag Info	N-terminal 6xHis-tagged
Mol. Weight	28.1kDa
Protein Length	Full Length
Image	



(Tris-Glycine gel) Discontinuous SDS-PAGE (reduced) with 5% enrichment gel and 15% separation gel.

Reconstitution

We recommend that this vial be briefly centrifuged prior to opening to bring the contents to the bottom. Please reconstitute protein in deionized sterile water to a concentration of 0.1-1.0 mg/mL. We recommend to add 5-50% of glycerol (final concentration) and aliquot for long-term storage at -20°C/-80°C. Our default final concentration of glycerol is 50%. Customers could use it as reference.

Shelf Life

The shelf life is related to many factors, storage state, buffer ingredients, storage temperature and the stability of the protein itself. Generally, the shelf life of liquid form is 6 months at -20°C/-80°C. The shelf life of lyophilized form is 12 months at -20°C/-80°C.