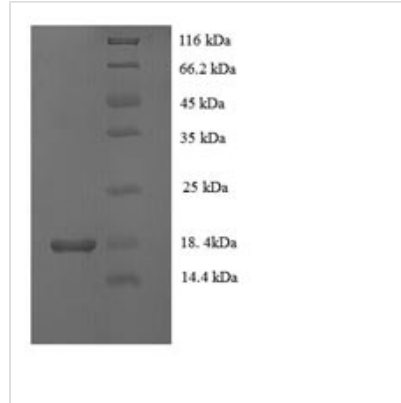


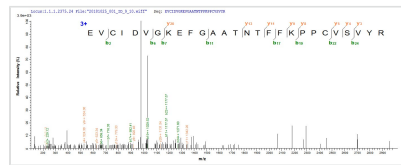


# Recombinant Mouse Vascular endothelial growth factor C (Vegfc)

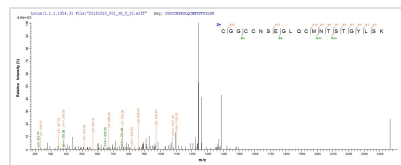
<b>Product Code</b>	CSB-EP025835MO
<b>Relevance</b>	Growth factor active in angiogenesis, and endothelial cell growth, stimulating their proliferation and migration and also has effects on the permeability of blood vessels. May function in angiogenesis of the venous and lymphatic vascular systems during embryogenesis, and also in the maintenance of differentiated lymphatic endothelium in adults. Binds and activates VEGFR-2 (KDR/FLK1) and VEGFR-3 (FLT4) receptors.
<b>Abbreviation</b>	Recombinant Mouse Vegfc protein
<b>Storage</b>	The shelf life is related to many factors, storage state, buffer ingredients, storage temperature and the stability of the protein itself. Generally, the shelf life of liquid form is 6 months at -20°C/-80°C. The shelf life of lyophilized form is 12 months at -20°C/-80°C.
<b>Uniprot No.</b>	P97953
<b>Alias</b>	Flt4 ligand ;Flt4-LVascular endothelial growth factor-related protein ;VRP
<b>Product Type</b>	Recombinant Protein
<b>Immunogen Species</b>	Mus musculus (Mouse)
<b>Purity</b>	Greater than 90% as determined by SDS-PAGE.
<b>Sequence</b>	AHYNTEILKSIDNEWWRKTQCMPCREVCIDVGKEFGAATNTFFKPPCVSVYRCGG CCNSEGLQCMNTSTGYLSKTLFEITVPLSQGPKPVTISFANHTSCRCMSKLDV YRQVHSIIRR
<b>Research Area</b>	Others
<b>Source</b>	E.coli
<b>Target Names</b>	Vegfc
<b>Expression Region</b>	108-223aa
<b>Notes</b>	Repeated freezing and thawing is not recommended. Store working aliquots at 4°C for up to one week.
<b>Tag Info</b>	N-terminal 6xHis-tagged
<b>Mol. Weight</b>	17.0kDa
<b>Protein Length</b>	Full Length of Mature Protein
<b>Image</b>	



(Tris-Glycine gel) Discontinuous SDS-PAGE (reduced) with 5% enrichment gel and 15% separation gel.



Based on the SEQUEST from database of E.coli host and target protein, the LC-MS/MS Analysis result of CSB-EP025835MO could indicate that this peptide derived from E.coli-expressed Mus musculus (Mouse) Vegfc.



Based on the SEQUEST from database of E.coli host and target protein, the LC-MS/MS Analysis result of CSB-EP025835MO could indicate that this peptide derived from E.coli-expressed Mus musculus (Mouse) Vegfc.

### Reconstitution

We recommend that this vial be briefly centrifuged prior to opening to bring the contents to the bottom. Please reconstitute protein in deionized sterile water to a concentration of 0.1-1.0 mg/mL. We recommend to add 5-50% of glycerol (final concentration) and aliquot for long-term storage at -20°C/-80°C. Our default final concentration of glycerol is 50%. Customers could use it as reference.

### Shelf Life

The shelf life is related to many factors, storage state, buffer ingredients, storage temperature and the stability of the protein itself. Generally, the shelf life of liquid form is 6 months at -20°C/-80°C. The shelf life of lyophilized form is 12 months at -20°C/-80°C.