



Recombinant *Candida albicans* pH-regulated antigen PRA1 (PRA1)

Product Code	CSB-YP308545CZD
Relevance	Cell surface protein involved in the host-parasite interaction during candidal infection. With MP65, represents a major component of the biofilm matrix. Sequesters zinc from host tissue and mediates leukocyte adhesion and migration. As a surface protein, binds the two human complement regulators CFH and CFHR1, as well as plasminogen PLG, mediates complement evasion and extra-cellular matrix interaction and/or degradation. As a released protein, enhances complement control in direct vicinity of the yeast and thus generates an additional protective layer which controls host complement attack, assisting the fungus in escaping host surveillance. Binds to host fluid-phase C3 and blocks cleavage of C3 to C3a and C3b, leading to inhibition of complement activation. Mediates also human complement control and complement evasion through binding to C4BPA, another human complement inhibitor, as well as through binding to host integrin alpha-M/beta-2. Decreases complement-mediated adhesion, as well as uptake of <i>C.albicans</i> by human macrophages.
Abbreviation	Recombinant <i>Candida albicans</i> PRA1 protein
Storage	The shelf life is related to many factors, storage state, buffer ingredients, storage temperature and the stability of the protein itself. Generally, the shelf life of liquid form is 6 months at -20°C/-80°C. The shelf life of lyophilized form is 12 months at -20°C/-80°C.
Uniprot No.	P87020
Storage Buffer	Tris-based buffer,50% glycerol
Product Type	Recombinant Proteins
Immunogen Species	<i>Candida albicans</i> (strain SC5314 / ATCC MYA-2876) (Yeast)
Purity	≥ 90% as determined by SDS-PAGE. ≥ 90% as determined by SEC-HPLC.
Sequence	APVTVTRFVDASPTGYDWRADWVKGFIDSSCNATQYNQLSTGLQEAQLLAE HARDHTLRFVSKSPFFRKYFGNETASAEVVGHFVGNVVGADKSSILFLCDDLDD KCKNDGWAGYWRGNSHSDQTIICDLFSVTRRYLTQLCSSGYTVSKSKTNIFW AGDLLHRFWHLKSIGQLVIEHYADTYEEVLELAQENSTYAVRNSNSLIYYALDV YAYDVTIPGEGCNGDGTSYKKSDFSSFFEDSDSGSDSGASSTASSSHQHTDSN PSATTDANSHCHTHADGEVHC
Research Area	Signal Transduction
Source	Yeast
Target Names	PRA1
Protein Names	58 kDa fibrinogen-binding mannosylated proteinFBP1
Expression Region	16-299aa



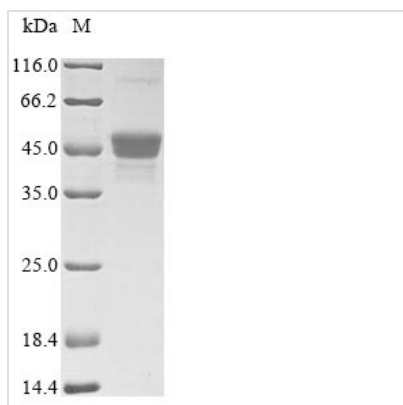
Notes Repeated freezing and thawing is not recommended. Store working aliquots at 4°C for up to one week.

Tag Info N-terminal 6xHis-tagged

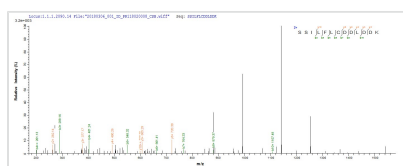
Mol. Weight 33.4 kDa

Protein Length Full Length of Mature Protein

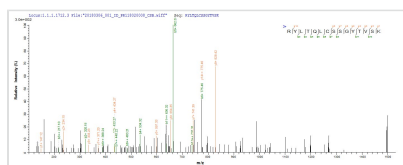
Image



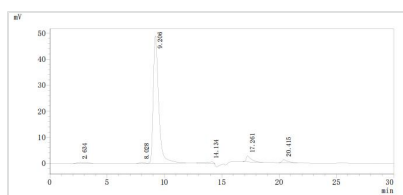
(Tris-Glycine gel) Discontinuous SDS-PAGE (reduced) with 5% enrichment gel and 15% separation gel.



Based on the SEQUEST from database of Yeast host and target protein, the LC-MS/MS Analysis result of CSB-YP308545CZD could indicate that this peptide derived from Yeast-expressed *Candida albicans* (strain SC5314 / ATCC MYA-2876) (Yeast) PRA1.



Based on the SEQUEST from database of Yeast host and target protein, the LC-MS/MS Analysis result of CSB-YP308545CZD could indicate that this peptide derived from Yeast-expressed *Candida albicans* (strain SC5314 / ATCC MYA-2876) (Yeast) PRA1.



The purity of PRA1 was greater than 90% as determined by SEC-HPLC

Shelf Life

The shelf life is related to many factors, storage state, buffer ingredients, storage temperature and the stability of the protein itself. Generally, the shelf life of liquid form is 6 months at -20°C/-80°C. The shelf life of lyophilized form is 12 months at -20°C/-80°C.