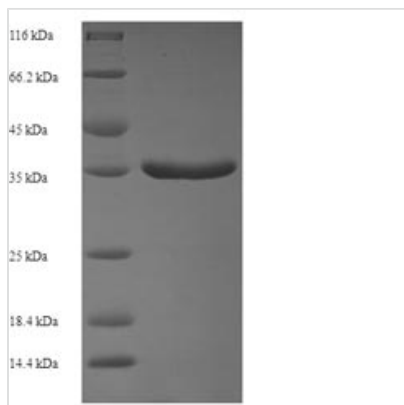


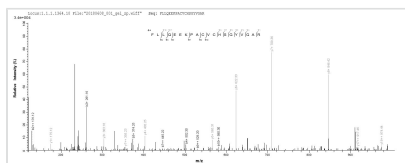


Recombinant Sheep Protransforming growth factor alpha (TGFA), partial

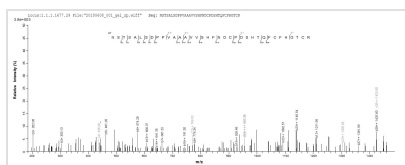
Product Code	CSB-EP023445SH
Relevance	TGF alpha is a mitogenic polypeptide that is able to bind to the EGF receptor/EGFR and to act synergistically with TGF beta to promote anchorage-independent cell proliferation in soft agar.
Abbreviation	Recombinant Sheep TGFA protein, partial
Storage	The shelf life is related to many factors, storage state, buffer ingredients, storage temperature and the stability of the protein itself. Generally, the shelf life of liquid form is 6 months at -20°C/-80°C. The shelf life of lyophilized form is 12 months at -20°C/-80°C.
Uniprot No.	P98135
Alias	EGF-like TGF ;ETGFTGF type 1
Product Type	Recombinant Protein
Immunogen Species	Ovis aries (Sheep)
Purity	≥ 90% as determined by SDS-PAGE.
Sequence	ENSTSALSDPPVAAAVVSHFNDCPDSHTQFCFHGTCRFLLLQEEKPACVCHSG YVGARCEHADLLAVVAASQKKQ
Research Area	Others
Source	E.coli
Target Names	TGFA
Protein Names	Recommended name: Protransforming growth factor alpha Cleaved into the following chain: 1. Transforming growth factor alpha Short name= 2. TGF-alpha Alternative name(s): EGF-like TGF Short name= ETGF TGF type 1
Expression Region	24-97aa
Notes	Repeated freezing and thawing is not recommended. Store working aliquots at 4°C for up to one week.
Tag Info	N-terminal GST-tagged
Mol. Weight	34.9kDa
Protein Length	Extracellular Domain
Image	



(Tris-Glycine gel) Discontinuous SDS-PAGE (reduced) with 5% enrichment gel and 15% separation gel.



Based on the SEQUEST from database of E.coli host and target protein, the LC-MS/MS Analysis result of CSB-EP023445SH could indicate that this peptide derived from E.coli-expressed Ovis aries (Sheep) TGFA.



Based on the SEQUEST from database of E.coli host and target protein, the LC-MS/MS Analysis result of CSB-EP023445SH could indicate that this peptide derived from E.coli-expressed Ovis aries (Sheep) TGFA.

Reconstitution

We recommend that this vial be briefly centrifuged prior to opening to bring the contents to the bottom. Please reconstitute protein in deionized sterile water to a concentration of 0.1-1.0 mg/mL. We recommend to add 5-50% of glycerol (final concentration) and aliquot for long-term storage at -20°C/-80°C. Our default final concentration of glycerol is 50%. Customers could use it as reference.

Shelf Life

The shelf life is related to many factors, storage state, buffer ingredients, storage temperature and the stability of the protein itself. Generally, the shelf life of liquid form is 6 months at -20°C/-80°C. The shelf life of lyophilized form is 12 months at -20°C/-80°C.