

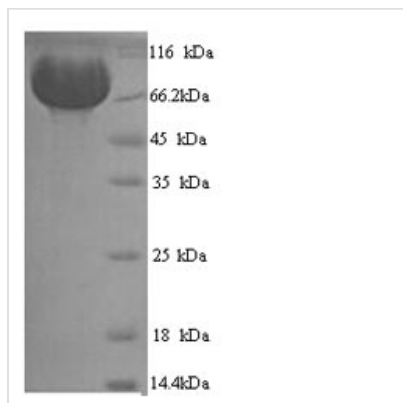


# Recombinant Human Neprilysin (MME), partial

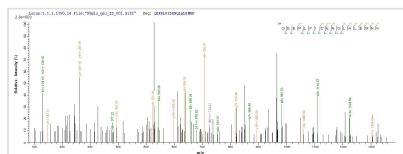
<b>Product Code</b>	CSB-YP014653HU
<b>Relevance</b>	Thermolysin-like specificity, but is almost confined on acting on polypeptides of up to 30 amino acids . Biologically important in the destruction of opioid peptides such as Met- and Leu-enkephalins by cleavage of a Gly-Phe bond . Able to cleave angiotensin-1, angiotensin-2 and angiotensin 1-9 . Involved in the degradation of atrial natriuretic factor (ANF) . Displays UV-inducible elastase activity toward skin preelastic and elastic fibers .
<b>Abbreviation</b>	Recombinant Human MME protein, partial
<b>Storage</b>	The shelf life is related to many factors, storage state, buffer ingredients, storage temperature and the stability of the protein itself. Generally, the shelf life of liquid form is 6 months at -20°C/-80°C. The shelf life of lyophilized form is 12 months at -20°C/-80°C.
<b>Uniprot No.</b>	P08473
<b>Alias</b>	AtriopeptidaseCommon acute lymphocytic leukemia antigen ;CALLAEnkephalinaseNeutral endopeptidase 24.11 ;NEP ;Neutral endopeptidase;Skin fibroblast elastase ;SFE; CD10
<b>Product Type</b>	Recombinant Protein
<b>Immunogen Species</b>	Homo sapiens (Human)
<b>Purity</b>	Greater than 90% as determined by SDS-PAGE.
<b>Sequence</b>	YDDGICKSSDCIKSAARLIQNMDATTEPCTDFFKYACGGWLKRNVIPETSSRY GNFDILRDELEVVLKDVLPKTEDIVAVQKAKALYRSCINESAIDSRGGPEPLLK LLPDIYGWVATENWEQKYGASWTAEKAIQNLNSKYGKKVLINLFGTDDKNS VNHVIHIDQPRLGLPSRDYECTGIYKEACTAYVDFMISVARLIRQEERLPIDEN QLALEMNKVMLEKEIANATAKPEDRNDPMLLYNKMTLAQIQNNFSLEINGKPF SWLNFTNEIMSTVNISITNEEDVVVYAPEYLTCLKPILTKYSARDLQNLMSWRFI MDLVSSLSRTYKESRNAFRKALYGTTSETATWRRCANVYVNGNMENAVGRLYV EAAFAGESKHVVEDLIAQIREVFIQTLDDLWMDAETKKRAEEKALAIKERIGYP DDIVSNDNKLNNEYLELNYKEDEYFENIQLNLFKFSQSKQLKREKVDKDEWIS GAAVVNAFYSSGRNQIVFPAGILQPPFFSAQQSNSLNYGGIGMVGHEITHGFD DNGRNFNKDGLVDWWTQQSASNFKEQSQCMVYQYGNFSWDLAGGQHLN GINTLGENIADNGGLGQAYRAYQNYIKKNGEEKLLPGLDLNHNKQLFFLNFAQV WCGTYRPEYAVNSIKTDVHSPGNFRIIGTLQNSAEFSEAFHCRKNSYMNPEKK CRVW
<b>Research Area</b>	Cancer
<b>Source</b>	Yeast
<b>Target Names</b>	MME
<b>Protein Names</b>	Recommended name: Neprilysin EC= 3.4.24.11 Alternative name(s): Atriopeptidase Common acute lymphocytic leukemia antigen Short name= CALLA Enkephalinase Neutral endopeptidase 24.11 Short name= NEP Short name=



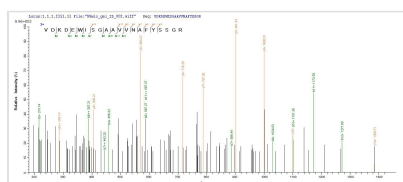
<b>Expression Region</b>	52-750aa
<b>Notes</b>	Repeated freezing and thawing is not recommended. Store working aliquots at 4°C for up to one week.
<b>Tag Info</b>	N-terminal 6xHis-tagged
<b>Mol. Weight</b>	81.8kDa
<b>Protein Length</b>	Extracellular Domain

**Image**


(Tris-Glycine gel) Discontinuous SDS-PAGE (reduced) with 5% enrichment gel and 15% separation gel.



Based on the SEQUEST from database of Yeast host and target protein, the LC-MS/MS Analysis result of CSB-YP014653HU could indicate that this peptide derived from Yeast-expressed Homo sapiens (Human) MME.



Based on the SEQUEST from database of Yeast host and target protein, the LC-MS/MS Analysis result of CSB-YP014653HU could indicate that this peptide derived from Yeast-expressed Homo sapiens (Human) MME.

**Reconstitution**

We recommend that this vial be briefly centrifuged prior to opening to bring the contents to the bottom. Please reconstitute protein in deionized sterile water to a concentration of 0.1-1.0 mg/mL. We recommend to add 5-50% of glycerol (final concentration) and aliquot for long-term storage at -20°C/-80°C. Our default final concentration of glycerol is 50%. Customers could use it as reference.

**Shelf Life**

The shelf life is related to many factors, storage state, buffer ingredients, storage temperature and the stability of the protein itself. Generally, the shelf life of liquid form is 6 months at -20°C/-80°C. The shelf life of lyophilized form is 12 months at -20°C/-80°C.