



Recombinant Human Receptor-type tyrosine-protein phosphatase C (PTPRC), partial

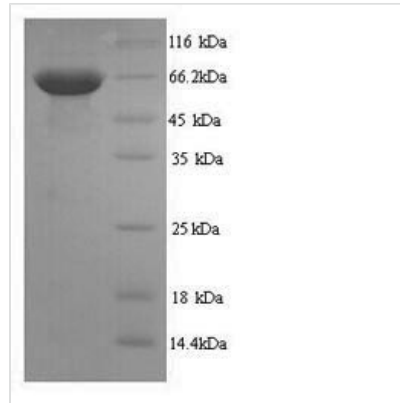
| | |
|--------------------------|--------------------------------------------------------------------------------------------------------------------------------------------------------------------------------------------------------------------------------------------------------------------------------------------------------------------------------------------------------------------------------------------------------------------------------------------------------------------------------------------------------------------------------------------------------------------------------------------------------------------------------------------------|
| Product Code | CSB-YP019049HU |
| Relevance | Protein tyrosine-protein phosphatase required for T-cell activation through the antigen receptor. Acts as a positive regulator of T-cell coactivation upon binding to DPP4. The first PTPase domain has enzymatic activity, while the second one ses to affect the substrate specificity of the first one. Upon T-cell activation, recruits and dephosphorylates SKAP1 and FYN. Dephosphorylates LYN, and thereby modulates LYN activity . |
| Abbreviation | Recombinant Human PTPRC protein, partial |
| Storage | The shelf life is related to many factors, storage state, buffer ingredients, storage temperature and the stability of the protein itself. Generally, the shelf life of liquid form is 6 months at -20°C/-80°C. The shelf life of lyophilized form is 12 months at -20°C/-80°C. |
| Uniprot No. | P08575 |
| Product Type | Recombinant Proteins |
| Immunogen Species | Homo sapiens (Human) |
| Purity | Greater than 90% as determined by SDS-PAGE. |
| Sequence | <p>QSPTPSPTGLTTAKMPSVPLSSDPLPHTHTTAFSPASTFERENDFSETTTSLSPD NTSTQVSPDSDLNASAFNTTGVSSTQTPHLPHTHADSQTSPAGTDTQTFSGSA ANAKLNPTPGSNAISDVPGERSTASTFPTDPVSPLTTTSLAHHSSAALPARTS NTTITANTSDAYLNASETTTLLSPSGSAVISTTTIATTPSKPTCDEKYANITVDYLY NKETKLFTAKLNVNENVECGNNTCTNNEVHNLTECKNASVSISHNSCTAPDKT LILDVPPGVEKFQLHDCTQVEKADTTICLKWKNIETFTCDTQNITYRFQCGNMIF DNKEIKLENLEPEHEYKCDSEILYNNHKFTNASKIIKTDGFGSPGEPQIIFCRSEAA HQQVITWNPPQRSFHNFTLCYIKETEKDCLNLDKNLIKDYDLQNLKPYTKYVLSL HAYIIAKVQRNGSAAMCHFTTKSAPPSQVWNMTVSMSTSDNSMHVKCRPPRD RNGPHERYHLEVEAGNTLVRNESHKNCDFRVKDLQYSTDYTFKAYFHNGDYP GEPFILHHSTSYNSK</p> |
| Research Area | Immunology |
| Source | Yeast |
| Target Names | PTPRC |
| Protein Names | Recommended name: Receptor-type tyrosine-protein phosphatase C EC= 3.1.3.48 Alternative name(s): Leukocyte common antigen Short name= L-CA T200 CD_antigen= CD45 |
| Expression Region | 26-577aa |
| Notes | Repeated freezing and thawing is not recommended. Store working aliquots at 4°C for up to one week. |
| Tag Info | N-terminal 6xHis-tagged |



Mol. Weight 62.8kDa

Protein Length Extracellular Domain

Image



(Tris-Glycine gel) Discontinuous SDS-PAGE (reduced) with 5% enrichment gel and 15% separation gel.

Shelf Life

The shelf life is related to many factors, storage state, buffer ingredients, storage temperature and the stability of the protein itself.

Generally, the shelf life of liquid form is 6 months at -20°C/-80°C. The shelf life of lyophilized form is 12 months at -20°C/-80°C.