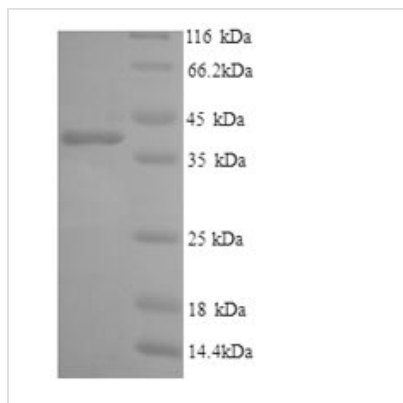




Recombinant Human Interleukin-6 receptor subunit alpha (IL6R), partial

Product Code	CSB-YP011665HU
Relevance	cytokine receptor activity
Abbreviation	Recombinant Human IL6R protein, partial
Storage	The shelf life is related to many factors, storage state, buffer ingredients, storage temperature and the stability of the protein itself. Generally, the shelf life of liquid form is 6 months at -20°C/-80°C. The shelf life of lyophilized form is 12 months at -20°C/-80°C.
Uniprot No.	P08887
Alias	Interleukin 6 receptor, isoform CRA_a
Product Type	Recombinant Protein
Purity	≥ 90% as determined by SDS-PAGE.
Sequence	LAPRRCPAQEVARGVLTSLPGDSVTLTCPGVEPEDNATVHWVLRKPAAGSHP SRWAGMGRRLLLRSVQLHDSGNYSYRAGRPAAGTVHLLVDVPPEEPQLSCF RKSPLSNVCEWGPSTPSLTTKAVLLVRKFQNSPAEDFQEPQYSQESQKF SCQLAVPEGDSSFYIVSMCVASSVGSKFSKTQTFQGCGILQPDPPANITVTAV ARNPRWLSVTWQDPHSWNSSFYRLRFELRYRAERSKTFTTWMVKDLQHHCV IHDAWSGLRHVVQLRAQEEFGQGEWSEWSPEAMGTPWTESRSPPAENEVS TPMQALTTNKDDNILFRDSANATSLPVQDSSSVPLP
Research Area	Immunology
Source	Yeast
Protein Names	Recommended name: Interleukin-6 receptor subunit alpha Short name= IL-6 receptor subunit alpha Short name= IL-6R subunit alpha Short name= IL-6R-alpha Short name= IL-6RAAlternative name(s): IL-6R 1 Membrane glycopr
Expression Region	20-365aa
Notes	Repeated freezing and thawing is not recommended. Store working aliquots at 4°C for up to one week.
Tag Info	N-terminal 6xHis-tagged
Mol. Weight	40.5kDa
Protein Length	Partial
Image	



(Tris-Glycine gel) Discontinuous SDS-PAGE (reduced) with 5% enrichment gel and 15% separation gel.

Reconstitution

We recommend that this vial be briefly centrifuged prior to opening to bring the contents to the bottom. Please reconstitute protein in deionized sterile water to a concentration of 0.1-1.0 mg/mL. We recommend to add 5-50% of glycerol (final concentration) and aliquot for long-term storage at -20°C/-80°C. Our default final concentration of glycerol is 50%. Customers could use it as reference.

Shelf Life

The shelf life is related to many factors, storage state, buffer ingredients, storage temperature and the stability of the protein itself. Generally, the shelf life of liquid form is 6 months at -20°C/-80°C. The shelf life of lyophilized form is 12 months at -20°C/-80°C.