

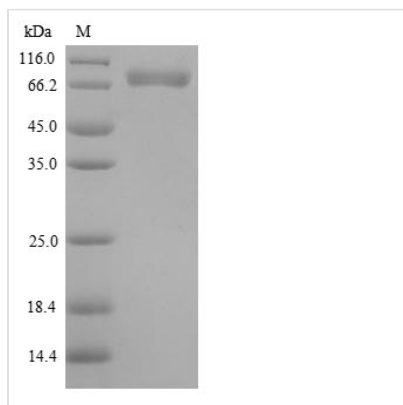


Recombinant Human Macrophage colony-stimulating factor 1 (CSF1)

| | |
|--------------------------|--|
| Product Code | CSB-YP006043HU |
| Relevance | Cytokine that plays an essential role in the regulation of survival, proliferation and differentiation of hematopoietic precursor cells, especially mononuclear phagocytes, such as macrophages and monocytes. Promotes the release of proinflammatory cytokines, and thereby plays an important role in innate immunity and in inflammatory processes. Plays an important role in the regulation of osteoclast proliferation and differentiation, the regulation of bone resorption, and is required for normal bone development. Required for normal male and female fertility. Promotes reorganization of the actin cytoskeleton, regulates formation of membrane ruffles, cell adhesion and cell migration. Plays a role in lipoprotein clearance. |
| Abbreviation | Recombinant Human CSF1 protein |
| Storage | The shelf life is related to many factors, storage state, buffer ingredients, storage temperature and the stability of the protein itself. Generally, the shelf life of liquid form is 6 months at -20°C/-80°C. The shelf life of lyophilized form is 12 months at -20°C/-80°C. |
| Uniprot No. | P09603 |
| Alias | Lanimostim |
| Product Type | Recombinant Protein |
| Immunogen Species | Homo sapiens (Human) |
| Purity | ≥ 90% as determined by SDS-PAGE. |
| Sequence | EEVSEYCSHMIGSGHLQSLQRLIDSQMETSCQITFEFVDQEQLKDPVCYLKKA FLLVQDIMEDTMRFRDNTPNIAIIVQLQELSLRLKSCFTKDYEEHDKACVRTFY ETPLQLLEKVKNVFNETKNLLDKDWNIFSKNCNNSFAECSSQDVVTKPDCNCL YPKAIPSSDPASVSPHQPLAPSMAPVAGLTWEDSEGTEGSSLLPGEQPLHTV DPGSAKQRPPRSTCQSFEPPEPVPVKDSTIGGSPQPRPSVGAFNPGMEDILD SAMGTNWWPEEASGEASEIPVPQGTELSRSPGGGSMQTEPARPSNFLSASS PLPASAKGQQPADVTGTALPRVGPVVRPTGQDWNHTPQKTDHPSALLRDPPE PGSPRISSLRPQGLSNPSTLSAQPLSRSHSSGSVLPLGELEGRRSTRDRRSP AEPEGGPASEGAARPLPRFNSVPLTDTGHERQSEGSFSPQLQESVFHLLVPS VILVLLAVGGLLFYRWRRRSHQEPQRADSPLEQPEGSPLTQDDRQVELPV |
| Research Area | Cardiovascular |
| Source | Yeast |
| Target Names | CSF1 |
| Expression Region | 33-554aa |
| Notes | Repeated freezing and thawing is not recommended. Store working aliquots at 4°C for up to one week. |



| | |
|-----------------------|-------------------------------|
| Tag Info | N-terminal 6xHis-tagged |
| Mol. Weight | 58.9kDa |
| Protein Length | Full Length of Mature Protein |

Image

(Tris-Glycine gel) Discontinuous SDS-PAGE (reduced) with 5% enrichment gel and 15% separation gel.

Reconstitution

We recommend that this vial be briefly centrifuged prior to opening to bring the contents to the bottom. Please reconstitute protein in deionized sterile water to a concentration of 0.1-1.0 mg/mL. We recommend to add 5-50% of glycerol (final concentration) and aliquot for long-term storage at -20°C/-80°C. Our default final concentration of glycerol is 50%. Customers could use it as reference.

Shelf Life

The shelf life is related to many factors, storage state, buffer ingredients, storage temperature and the stability of the protein itself. Generally, the shelf life of liquid form is 6 months at -20°C/-80°C. The shelf life of lyophilized form is 12 months at -20°C/-80°C.