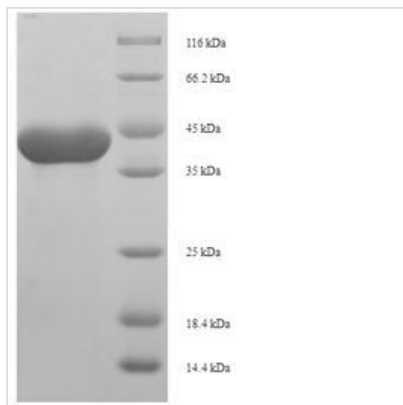




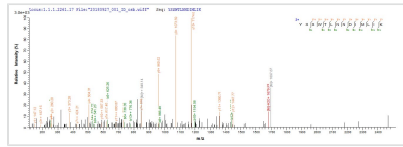
# Recombinant Rat Serine protease 1 (Prss1)

<b>Product Code</b>	CSB-EP018811RA
<b>Abbreviation</b>	Recombinant Rat Prss1 protein
<b>Storage</b>	The shelf life is related to many factors, storage state, buffer ingredients, storage temperature and the stability of the protein itself. Generally, the shelf life of liquid form is 6 months at -20°C/-80°C. The shelf life of lyophilized form is 12 months at -20°C/-80°C.
<b>Uniprot No.</b>	P00762
<b>Product Type</b>	Recombinant Proteins
<b>Immunogen Species</b>	Rattus norvegicus (Rat)
<b>Purity</b>	Greater than 90% as determined by SDS-PAGE.
<b>Sequence</b>	IVGGYTCPEHSVPYQVSLNSGYHFCGGLINDQWVVSAAHCYKSRIQVRLGE HNINVLEGDEQFINAAKIIKHPNYSSWTLNNDIMLIKLSPPVKLNARVAPVALPSA CAPAGTQCLISGWGNTLSNGVNNPDLLQCVDAPVLSQADCEAAYPGEITSSMI CVGFLEGGKDSCQGDSGGPVVCNGQLQGIVSWGYGICALPDNPGVYTKVCNF VGWIQDTIAAN
<b>Research Area</b>	Others
<b>Source</b>	E.coli
<b>Target Names</b>	Prss1
<b>Protein Names</b>	Recommended name: Anionic trypsin-1 EC= 3.4.21.4Alternative name(s): Anionic trypsin I Pretrypsinogen I Serine protease 1
<b>Expression Region</b>	24-246aa
<b>Notes</b>	Repeated freezing and thawing is not recommended. Store working aliquots at 4°C for up to one week.
<b>Tag Info</b>	N-terminal 6xHis-SUMO-tagged
<b>Mol. Weight</b>	39.6kDa
<b>Protein Length</b>	Full Length of Mature Protein

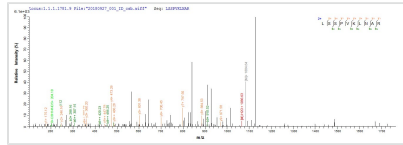
## Image



(Tris-Glycine gel) Discontinuous SDS-PAGE (reduced) with 5% enrichment gel and 15% separation gel.



Based on the SEQUEST from database of E.coli host and target protein, the LC-MS/MS Analysis result of CSB-EP018811RA could indicate that this peptide derived from E.coli-expressed *Rattus norvegicus* (Rat) Prss1.



Based on the SEQUEST from database of E.coli host and target protein, the LC-MS/MS Analysis result of CSB-EP018811RA could indicate that this peptide derived from E.coli-expressed *Rattus norvegicus* (Rat) Prss1.

### Shelf Life

The shelf life is related to many factors, storage state, buffer ingredients, storage temperature and the stability of the protein itself.

Generally, the shelf life of liquid form is 6 months at -20°C/-80°C. The shelf life of lyophilized form is 12 months at -20°C/-80°C.