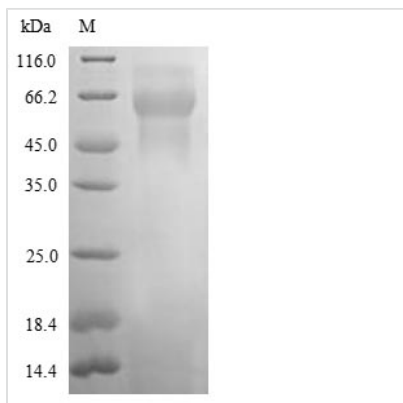




# Recombinant Rat Neogenin (Neo1), partial

<b>Product Code</b>	CSB-YP015712RA
<b>Relevance</b>	Multi-functional cell surface receptor regulating cell adhesion in many diverse developmental processes, including neural tube and mammary gland formation, myogenesis and angiogenesis. Receptor for members of the BMP, netrin, and repulsive guidance molecule (RGM) families. Netrin-Neogenin interactions result in a chemoattractive axon guidance response and cell-cell adhesion, the interaction between NEO1/Neogenin and RGMa and RGMb induces a chemorepulsive response
<b>Abbreviation</b>	Recombinant Rat Neo1 protein, partial
<b>Storage</b>	The shelf life is related to many factors, storage state, buffer ingredients, storage temperature and the stability of the protein itself. Generally, the shelf life of liquid form is 6 months at -20°C/-80°C. The shelf life of lyophilized form is 12 months at -20°C/-80°C.
<b>Uniprot No.</b>	P97603
<b>Product Type</b>	Recombinant Protein
<b>Immunogen Species</b>	Rattus norvegicus (Rat)
<b>Purity</b>	≥ 85% as determined by SDS-PAGE.
<b>Sequence</b>	CTRRTTSHQKKKRAACKSVNGSHKYKGNCKDVKPPDLWIHHERLELKPIDKSP DPNPVMTDTPIPRNSQDITPVDNSMDSNIHQRRNSYRGHESEDMSMSTLAGRR GMRPKMMMPFDSQPPQQSVRNTPTSTDTMPASSSQTCCTDHQDPEGATSSS YLASSQEEDSGQSLPTAHVRPSHPLKSFVPAIPPPGPIYDPALPSTPLLSQQ ALNHHLHSVKTASIGTLGRSRPPMPVVVPSAPEVQEATRMLEDSESSYEPDEL TKEMAHLEGLMKDLNAITTA
<b>Research Area</b>	Neuroscience
<b>Source</b>	Yeast
<b>Target Names</b>	Neo1
<b>Protein Names</b>	Ngn
<b>Expression Region</b>	1096-1377aa
<b>Notes</b>	Repeated freezing and thawing is not recommended. Store working aliquots at 4°C for up to one week.
<b>Tag Info</b>	N-terminal 6xHis-tagged
<b>Mol. Weight</b>	33.0 kDa
<b>Protein Length</b>	Partial
<b>Image</b>	



(Tris-Glycine gel) Discontinuous SDS-PAGE (reduced) with 5% enrichment gel and 15% separation gel.

### Reconstitution

We recommend that this vial be briefly centrifuged prior to opening to bring the contents to the bottom. Please reconstitute protein in deionized sterile water to a concentration of 0.1-1.0 mg/mL. We recommend to add 5-50% of glycerol (final concentration) and aliquot for long-term storage at -20°C/-80°C. Our default final concentration of glycerol is 50%. Customers could use it as reference.

### Shelf Life

The shelf life is related to many factors, storage state, buffer ingredients, storage temperature and the stability of the protein itself. Generally, the shelf life of liquid form is 6 months at -20°C/-80°C. The shelf life of lyophilized form is 12 months at -20°C/-80°C.