

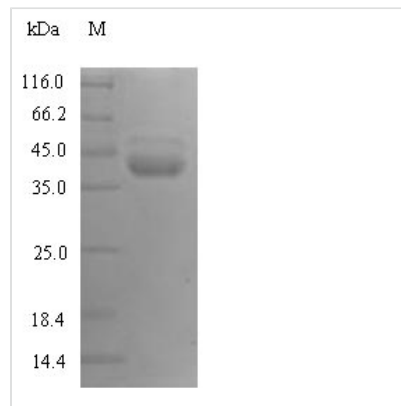


Recombinant Human Plasma kallikrein (KLKB1), partial

Product Code	CSB-YP012461HU
Relevance	The enzyme cleaves Lys-Arg and Arg-Ser bonds. It activates, in a reciprocal reaction, factor XII after its binding to a negatively charged surface. It also releases bradykinin from HMW kininogen and may also play a role in the renin-angiotensin system by converting prorenin into renin.
Abbreviation	Recombinant Human KLKB1 protein, partial
Storage	The shelf life is related to many factors, storage state, buffer ingredients, storage temperature and the stability of the protein itself. Generally, the shelf life of liquid form is 6 months at -20°C/-80°C. The shelf life of lyophilized form is 12 months at -20°C/-80°C.
Uniprot No.	P03952
Alias	Fletcher factor Kininogenin Plasma prekallikrein
Product Type	Recombinant Protein
Immunogen Species	Homo sapiens (Human)
Purity	≥ 90% as determined by SDS-PAGE.
Sequence	GCLTQLYENAFFRGGDVASMYTPNAQYQCQMRCTFHPRCLLFSFLPASSINDM EKRFGCFLKDSVTGTLPKVHRTGAVSGHSLKQCGHQISACHRDIYKGVDMRG VNFNVSKVSSVEECQKRCTNNIRCQFFSYATQTFHKAERYNNCLLKYSPPGGT PTAIKVLNSVESGFSLKPCALSEIGCHMNIFQHLAFSDVDVARVLTDPDAFVCRTI CTYHPNCLFFTFYTNVWKIESQRNVCLLKTSESGTPSSSTPQENTISGYSLLTC KRTLPEPCHSKIYPGVDFGGEELNVTFVKGVNVCQETCTKMIRCQFFTYSLLP EDCKEEKCKCFLRLSMDGSPTRIAYGQTQGSSGYSLRLCNTGDNSVCTTKTST R
Research Area	Cell Biology
Source	Yeast
Target Names	KLKB1
Protein Names	Recommended name: Plasma kallikrein EC= 3.4.21.34 Alternative name(s): Fletcher factor Kininogenin Plasma prekallikrein Cleaved into the following 2 chains: 1. Plasma kallikrein heavy chain 2. Plasma kallikrein light chain
Expression Region	20-390aa
Notes	Repeated freezing and thawing is not recommended. Store working aliquots at 4°C for up to one week.
Tag Info	N-terminal 6xHis-tagged
Mol. Weight	43.4kDa
Protein Length	Partial



Image



(Tris-Glycine gel) Discontinuous SDS-PAGE (reduced) with 5% enrichment gel and 15% separation gel.

Reconstitution

We recommend that this vial be briefly centrifuged prior to opening to bring the contents to the bottom. Please reconstitute protein in deionized sterile water to a concentration of 0.1-1.0 mg/mL. We recommend to add 5-50% of glycerol (final concentration) and aliquot for long-term storage at -20°C/-80°C. Our default final concentration of glycerol is 50%. Customers could use it as reference.

Shelf Life

The shelf life is related to many factors, storage state, buffer ingredients, storage temperature and the stability of the protein itself.

Generally, the shelf life of liquid form is 6 months at -20°C/-80°C. The shelf life of lyophilized form is 12 months at -20°C/-80°C.