

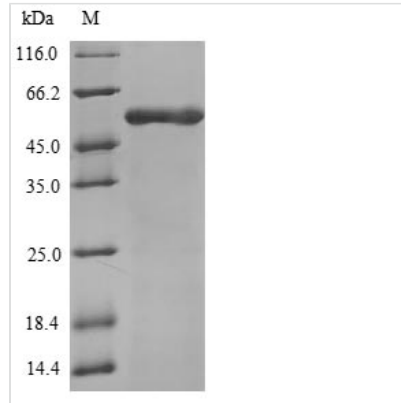


Recombinant Human ATP synthase F(1) complex subunit beta, mitochondrial (ATP5F1B)

Product Code	CSB-YP002350HU
Relevance	Mitochondrial membrane ATP synthase (F1F0 ATP synthase or Complex V) produces ATP from ADP in the presence of a proton gradient across the membrane which is generated by electron transport complexes of the respiratory chain. F-type ATPases consist of two structural domains, F1 - containing the extramembraneous catalytic core, and F0 - containing the membrane proton channel, linked together by a central stalk and a peripheral stalk. During catalysis, ATP synthesis in the catalytic domain of F1 is coupled via a rotary mechanism of the central stalk subunits to proton translocation. Subunits alpha and beta form the catalytic core in F1. Rotation of the central stalk against the surrounding alpha3beta3 subunits leads to hydrolysis of ATP in three separate catalytic sites on the beta subunits.
Abbreviation	Recombinant Human ATP5F1B protein
Storage	The shelf life is related to many factors, storage state, buffer ingredients, storage temperature and the stability of the protein itself. Generally, the shelf life of liquid form is 6 months at -20°C/-80°C. The shelf life of lyophilized form is 12 months at -20°C/-80°C.
Uniprot No.	P06576
Product Type	Recombinant Proteins
Immunogen Species	Homo sapiens (Human)
Purity	≥ 90% as determined by SDS-PAGE.
Sequence	AQTSPSPKAGAATGRIVAVIGAVVDVQFDEGLPPIILNALEVQGRETRLVLEVAQ HLGESTVRTIAMDGTEGLVVRGQKVLDSGAPIKIPVGPETLGRIMNVIGEPIDER GPIKTKQFAPIHAEAPEFMEMSVEQEILVTGIKVVDLLAPYAKGGKIGLFGGAGV GKTVLIMELINNVAKAHGGYSVFAGVGERETREGNDLYHEMIESGVINLKDATSK VALVYGMNEPPGARARVALTGLTVAEYFRDQEGQDVLLFIDNIFRFTQAGSE VSALLGRIPSAVGYQPTLATDMGMTMERITTTKKSITSVQAIYVPADDLTDPA PATTFAHLDTTFLSRAIAELGIYPAVDPLDSTSRIMDPNIVGSEHYDVARGVQK ILQDYKSLQDIIAILGMDLSEEDKLTVSRARKIQRFLSQPFQVAEVFTGHMGKL VPLKETIKGFQQILAGEYDHLPEQAFYMGPIEEAVAKADKLAEEHSS
Research Area	Tags & Cell Markers
Source	Yeast
Target Names	ATP5B
Protein Names	Recommended name: ATP synthase subunit beta, mitochondrial EC= 3.6.3.14
Expression Region	48-529aa
Notes	Repeated freezing and thawing is not recommended. Store working aliquots at 4°C for up to one week.



Tag Info	N-terminal 6xHis-tagged
Mol. Weight	53.8kDa
Protein Length	Full Length of Mature Protein

Image

(Tris-Glycine gel) Discontinuous SDS-PAGE (reduced) with 5% enrichment gel and 15% separation gel.

Shelf Life

The shelf life is related to many factors, storage state, buffer ingredients, storage temperature and the stability of the protein itself. Generally, the shelf life of liquid form is 6 months at -20°C/-80°C. The shelf life of lyophilized form is 12 months at -20°C/-80°C.