

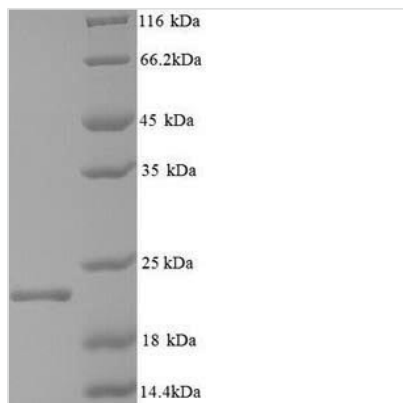


Recombinant Hepatitis B virus genotype C subtype ayw Capsid protein (C)

Product Code	CSB-YP314449HEI
Relevance	Self assembles to form an icosahedral capsid. Most capsids appear to be large particles with an icosahedral symmetry of T=4 and consist of 240 copies of capsid protein, though a fraction forms smaller T=3 particles consisting of 180 capsid proteins. Entering capsids are transported along microtubules to the nucleus. Phosphorylation of the capsid is thought to induce exposure of a nuclear localization signal in the C-terminal portion of the capsid protein that allows binding to the nuclear pore complex via the importin (karyopherin-) alpha and beta. Capsids are imported in intact form through the nuclear pore into the nuclear basket, where they probably bind to NUP153. Only capsids that contain the mature viral genome can release the viral DNA and capsid protein into the nucleoplasm. Immature capsids get stuck in the basket. Capsids encapsulate the pre-genomic RNA and the P protein. Pre-genomic RNA is reverse transcribed into DNA while the capsid is still in the cytoplasm. The capsid can then either be directed to the nucleus, providing more genome for transcription, or bud through the endoplasmic reticulum to provide new virions. Encapsidates hepatitis delta genome.
Abbreviation	Recombinant Hepatitis B virus genotype C subtype ayw C, HBcAg protein
Storage	The shelf life is related to many factors, storage state, buffer ingredients, storage temperature and the stability of the protein itself. Generally, the shelf life of liquid form is 6 months at -20°C/-80°C. The shelf life of lyophilized form is 12 months at -20°C/-80°C.
Uniprot No.	P0C6H7
Alias	Core antigen; Core protein HBcAg p21.5
Product Type	Recombinant Protein
Immunogen Species	Hepatitis B virus genotype C subtype ayw (isolate China/Tibet127/2002) (HBV-C)
Purity	Greater than 90% as determined by SDS-PAGE.
Sequence	MDIDPYKEFGASVEVLSFLPSDFPSPNRDLLDTASALDREALESPEHCSPHHT ALRQAILCWGELMNLATWVGSNLEDPASRELVSYSVNVNMGLKIRQLLWFHIS CLTFGRETVLEYLVSFGVWIRTPPAYRPPNAPILSTLPETTIVRRRGRSPRRRT PSPRRRRSQSPRRRRRSQSRESQC
Research Area	Others
Source	Yeast
Target Names	C
Protein Names	Recommended name: Capsid protein Alternative name(s): Core antigen Core protein HBcAg p21.5



Expression Region	1-183aa
Notes	Repeated freezing and thawing is not recommended. Store working aliquots at 4°C for up to one week.
Tag Info	N-terminal 6xHis-tagged
Mol. Weight	23.0kDa
Protein Length	Full Length

Image


(Tris-Glycine gel) Discontinuous SDS-PAGE (reduced) with 5% enrichment gel and 15% separation gel.

Reconstitution	We recommend that this vial be briefly centrifuged prior to opening to bring the contents to the bottom. Please reconstitute protein in deionized sterile water to a concentration of 0.1-1.0 mg/mL. We recommend to add 5-50% of glycerol (final concentration) and aliquot for long-term storage at -20°C/-80°C. Our default final concentration of glycerol is 50%. Customers could use it as reference.
-----------------------	---

Shelf Life	The shelf life is related to many factors, storage state, buffer ingredients, storage temperature and the stability of the protein itself. Generally, the shelf life of liquid form is 6 months at -20°C/-80°C. The shelf life of lyophilized form is 12 months at -20°C/-80°C.
-------------------	---