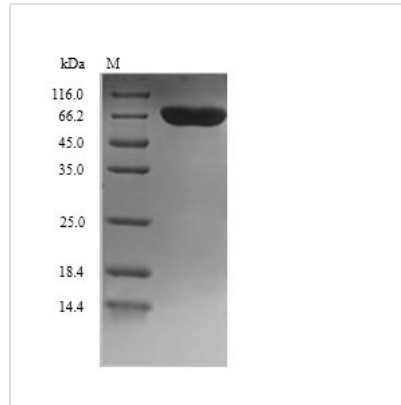




# Recombinant Human Dopamine beta-hydroxylase (DBH), partial

<b>Product Code</b>	CSB-YP006518HU
<b>Relevance</b>	Conversion of dopamine to noradrenaline.
<b>Abbreviation</b>	Recombinant Human DBH protein, partial
<b>Storage</b>	The shelf life is related to many factors, storage state, buffer ingredients, storage temperature and the stability of the protein itself. Generally, the shelf life of liquid form is 6 months at -20°C/-80°C. The shelf life of lyophilized form is 12 months at -20°C/-80°C.
<b>Uniprot No.</b>	P09172
<b>Product Type</b>	Recombinant Proteins
<b>Immunogen Species</b>	Homo sapiens (Human)
<b>Purity</b>	≥ 90% as determined by SDS-PAGE.
<b>Sequence</b>	SAPRESPLPYHIPLDPEGSLELSWNVSYTQEAIHFQLLVRRLKAGVLFGMSDR GELENADLVVLWTDGDTAYFADAWSDQKGGQIHLDPQQDYQLLQVQRTPEGLT LLFKRPFGTCDPKDYLIEDGTVHLVYGILEEPPFRSLEAINGSLQMGLQRVQLL KPNIPPELPSDACTMEVQAPNIQIPSQETTYWCYIKELPKGFSSRHHIIKYEPIVT KGNEALVHHMEVFQCAPEMDSVPHFSGPCDSKMKPDRLNYCRHVLAAWALG AKAFYYPEEAGLAFGGPGSSRYLRLEVHYHNPLVIEGRNDSSGIRLYYTAKLR RFNAGIMELGLVYTPVMAIPPRETAFILTGYCTDKCTQLALPPSGIHFASQLHT HLTGRKVVTVLVRDGREWEIVNQDNHYSHPHFQEIRMLKKVSVHPGDVLITSC TYNTEDRELATVGGFGILEEMCVNYVHYYPQTQLELCKSAVDAGFLQKYFHLLI NRFNNEVDVCTCPQASVSQQFTSVPWNSFNRDVLKALYSFAPISMHCNKSSAV RFQGEWNLQPLPKVISTLEEPTQCPTSQGRSPAGPTVVSIGGGKG
<b>Research Area</b>	Neuroscience
<b>Source</b>	Yeast
<b>Target Names</b>	DBH
<b>Protein Names</b>	Recommended name: Dopamine beta-hydroxylase EC= 1.14.17.1 Alternative name(s): Dopamine beta-monooxygenase Cleaved into the following chain: 1. Soluble dopamine beta-hydroxylase
<b>Expression Region</b>	40-617aa
<b>Notes</b>	Repeated freezing and thawing is not recommended. Store working aliquots at 4°C for up to one week.
<b>Tag Info</b>	N-terminal 6xHis-tagged
<b>Mol. Weight</b>	66.9kDa
<b>Protein Length</b>	Partial
<b>Image</b>	



(Tris-Glycine gel) Discontinuous SDS-PAGE (reduced) with 5% enrichment gel and 15% separation gel.

### Shelf Life

The shelf life is related to many factors, storage state, buffer ingredients, storage temperature and the stability of the protein itself.

Generally, the shelf life of liquid form is 6 months at -20°C/-80°C. The shelf life of lyophilized form is 12 months at -20°C/-80°C.