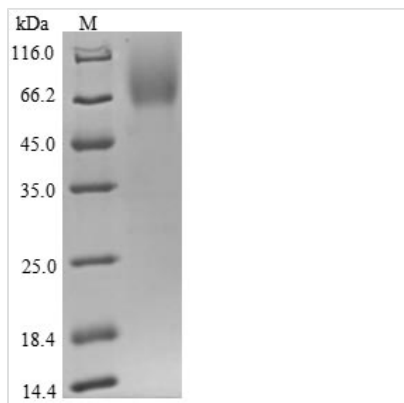




Recombinant Human CD48 antigen (CD48)

Product Code	CSB-YP004941HU
Relevance	Ligand for CD2. Might facilitate interaction between activated lymphocytes. Probably involved in regulating T-cell activation.
Abbreviation	Recombinant Human CD48 protein
Storage	The shelf life is related to many factors, storage state, buffer ingredients, storage temperature and the stability of the protein itself. Generally, the shelf life of liquid form is 6 months at -20°C/-80°C. The shelf life of lyophilized form is 12 months at -20°C/-80°C.
Uniprot No.	P09326
Product Type	Recombinant Protein
Immunogen Species	Homo sapiens (Human)
Purity	Greater than 85% as determined by SDS-PAGE.
Sequence	QGHLVHMTVVSQSNVTLNISESLPENYKQLTWFYTFDQKIVEWDSRKSKEYFES KFKGRVRLDPQSGALYISKVQKEDNSTYIMRVLKKTGNEQEWKIKLQVLDPVV KPKVIEKIEDMDDNCYLKLSCVIPGESVNYTWYGDKRPFKELQNSVLETTLM PHNYSRCYTCQVSNSVSSKNGTVCLSPCTLARS
Research Area	Immunology
Source	Yeast
Target Names	CD48
Protein Names	B-lymphocyte activation marker BLAST-1 BCM1 surface antigen Leukocyte antigen MEM-102 SLAM family member 2 Short name: SLAMF2 Signaling lymphocytic activation molecule 2 TCT.1 CD_antigen: CD48 BCM1, BLAST1
Expression Region	27-220aa
Notes	Repeated freezing and thawing is not recommended. Store working aliquots at 4°C for up to one week.
Tag Info	N-terminal hFc-tagged
Mol. Weight	48.3 kDa
Protein Length	Full Length of Mature Protein
Image	



(Tris-Glycine gel) Discontinuous SDS-PAGE (reduced) with 5% enrichment gel and 15% separation gel.

Reconstitution

We recommend that this vial be briefly centrifuged prior to opening to bring the contents to the bottom. Please reconstitute protein in deionized sterile water to a concentration of 0.1-1.0 mg/mL. We recommend to add 5-50% of glycerol (final concentration) and aliquot for long-term storage at -20°C/-80°C. Our default final concentration of glycerol is 50%. Customers could use it as reference.

Shelf Life

The shelf life is related to many factors, storage state, buffer ingredients, storage temperature and the stability of the protein itself. Generally, the shelf life of liquid form is 6 months at -20°C/-80°C. The shelf life of lyophilized form is 12 months at -20°C/-80°C.