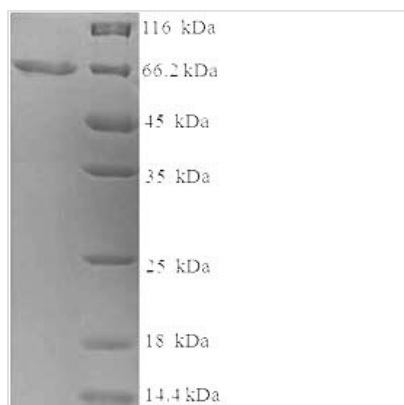




Recombinant Human Keratin, type I cytoskeletal 14 (KRT14)

Product Code	CSB-EP012512HU
Relevance	The nonhelical tail domain is involved in promoting KRT5-KRT14 filaments to self-organize into large bundles and enhances the mechanical properties involved in resilience of keratin intermediate filaments in vitro.
Abbreviation	Recombinant Human KRT14 protein
Storage	The shelf life is related to many factors, storage state, buffer ingredients, storage temperature and the stability of the protein itself. Generally, the shelf life of liquid form is 6 months at -20°C/-80°C. The shelf life of lyophilized form is 12 months at -20°C/-80°C.
Uniprot No.	P02533
Alias	Cytokeratin-14 ;CK-14Keratin-14 ;K14
Product Type	Recombinant Protein
Immunogen Species	Homo sapiens (Human)
Purity	≥ 90% as determined by SDS-PAGE.
Sequence	<p>MTTCSRQFTSSSSMKGSCGIGGGIGGGSSRISVLAGGSCRAPSTYGGGLSV SSSRFSSGGACGLGGGYGGGFSSSSSSFGSGFGGGYGGGLGAGLGGGFGG GFAGGDGLLVGSEKVTMQLNDRLASYLDKVRALLEANADLEVKIRDWYQRQ RPAEIKDYSPYFKTIEDLRNKILTATVDNANVLLQIDNARLAADDFRTKYETELNL RMSVEADINGLRRVLDELTLARADLEMQIESLKEELAYLKKNHHEEEMNALRGQ VGGDVNVEMDAAPGVDLSRILNEMRDQYEKMAEKNRKDAEEWFFTKTEELN REVATNSELVQSGKSEISELRRTMQNLEIELQSLSMKASLENSLEETKGRYC MQLAQIQEMIGSVEEQLAQLRCEMEQQNQEYKILLDVKTRLEQEIATYRRLLEG EDAHLSSSQFSSGSQSSRDVTSSSRQIRTKVMDVHDGKVVSTHEQVLRTKN</p>
Research Area	Signal Transduction
Source	E.coli
Target Names	KRT14
Expression Region	1-472aa
Notes	Repeated freezing and thawing is not recommended. Store working aliquots at 4°C for up to one week.
Tag Info	N-terminal 6xHis-SUMO-tagged
Mol. Weight	67.6kDa
Protein Length	Full Length
Image	



(Tris-Glycine gel) Discontinuous SDS-PAGE (reduced) with 5% enrichment gel and 15% separation gel.

Reconstitution

We recommend that this vial be briefly centrifuged prior to opening to bring the contents to the bottom. Please reconstitute protein in deionized sterile water to a concentration of 0.1-1.0 mg/mL. We recommend to add 5-50% of glycerol (final concentration) and aliquot for long-term storage at $-20^{\circ}\text{C}/-80^{\circ}\text{C}$. Our default final concentration of glycerol is 50%. Customers could use it as reference.

Shelf Life

The shelf life is related to many factors, storage state, buffer ingredients, storage temperature and the stability of the protein itself. Generally, the shelf life of liquid form is 6 months at $-20^{\circ}\text{C}/-80^{\circ}\text{C}$. The shelf life of lyophilized form is 12 months at $-20^{\circ}\text{C}/-80^{\circ}\text{C}$.