

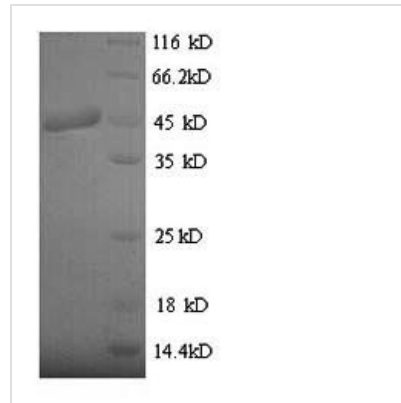


Recombinant Clostridium botulinum Botulinum neurotoxin type B (botB), partial

Product Code	CSB-YP318083CLQ
Relevance	Botulinum toxin acts by inhibiting neurotransmitter release. It binds to peripheral neuronal synapses, is internalized and moves by retrograde transport up the axon into the spinal cord where it can move between postsynaptic and presynaptic neurons. It inhibits neurotransmitter release by acting as a zinc endopeptidase that cleaves the '76-Gln- -Phe-77' bond of synaptobrevin-2.
Abbreviation	Recombinant Clostridium botulinum botB protein, partial
Storage	The shelf life is related to many factors, storage state, buffer ingredients, storage temperature and the stability of the protein itself. Generally, the shelf life of liquid form is 6 months at -20°C/-80°C. The shelf life of lyophilized form is 12 months at -20°C/-80°C.
Uniprot No.	P10844
Alias	Bontoxilysin-B
Product Type	Recombinant Protein
Immunogen Species	Clostridium botulinum
Purity	Greater than 90% as determined by SDS-PAGE.
Sequence	MPVTINNFNYNDPIDNNNIIMMEPPFARGTGRIYKAFKITDRIWIIPERYTFGYK PEDFNKSSGIFNRDVCEYYDPDYLNTNDKKNIFLQTMIKLFNRIKSKPLGEKLL MIINGIPYLGDRRVPLEEFNTNIASVTVNKLISNPGEVERKKGIFANLIIFGPGPVL NENETIDIGIQNHFASREGFGGIMQMKFCPEYVSFVFNQENKGASIFNRRGY FSDPALILMHELIHVLHGLYGIKVDLPIVPNEKFFMQSTDAIQAEELYTFGGQ DPSIITPSTDKSIYDKVLQNFGRGIVDRLNKVLCISDPNININIYKNKFKDKYKFE DSEGKYSIDVESFDKLYKSLMFGFTETNIAENYKIKTRASFYFSDSLPPVKIKNLL DNEIYTIEEGFNISDKDMEKEYRGQNKAINKQAYEEISKE
Research Area	Others
Source	Yeast
Target Names	botB
Protein Names	Recommended name: Botulinum neurotoxin type B Short name= BoNT/B EC= 3.4.24.69 Alternative name(s): Bontoxilysin-B Cleaved into the following 2 chains: 1. Botulinum neurotoxin B light chain 2. Botulinum neurotoxin B heavy cha
Expression Region	1-427aa
Notes	Repeated freezing and thawing is not recommended. Store working aliquots at 4°C for up to one week.
Tag Info	N-terminal 6xHis-tagged
Mol. Weight	51.3kDa

**Protein Length**

Partial

Image

(Tris-Glycine gel) Discontinuous SDS-PAGE (reduced) with 5% enrichment gel and 15% separation gel.

Reconstitution

We recommend that this vial be briefly centrifuged prior to opening to bring the contents to the bottom. Please reconstitute protein in deionized sterile water to a concentration of 0.1-1.0 mg/mL. We recommend to add 5-50% of glycerol (final concentration) and aliquot for long-term storage at -20°C/-80°C. Our default final concentration of glycerol is 50%. Customers could use it as reference.

Shelf Life

The shelf life is related to many factors, storage state, buffer ingredients, storage temperature and the stability of the protein itself. Generally, the shelf life of liquid form is 6 months at -20°C/-80°C. The shelf life of lyophilized form is 12 months at -20°C/-80°C.