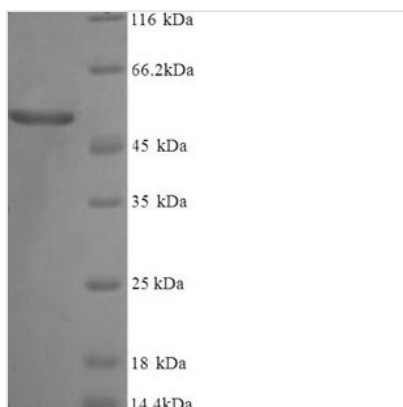


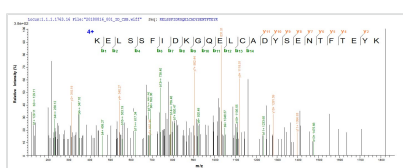


# Recombinant Human Vitamin D-binding protein (GC), partial

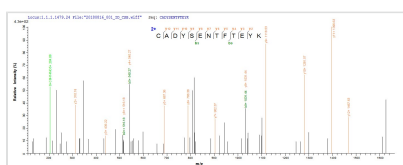
<b>Product Code</b>	CSB-YP009306HU
<b>Relevance</b>	Involved in vitamin D transport and storage, scavenging of extracellular G-actin, enhancement of the chemotactic activity of C5 alpha for neutrophils in inflammation and macrophage activation.
<b>Abbreviation</b>	Recombinant Human GC protein, partial
<b>Storage</b>	The shelf life is related to many factors, storage state, buffer ingredients, storage temperature and the stability of the protein itself. Generally, the shelf life of liquid form is 6 months at -20°C/-80°C. The shelf life of lyophilized form is 12 months at -20°C/-80°C.
<b>Uniprot No.</b>	P02774
<b>Alias</b>	Gc protein-derived macrophage activating factor
<b>Product Type</b>	Recombinant Protein
<b>Immunogen Species</b>	Homo sapiens (Human)
<b>Purity</b>	Greater than 90% as determined by SDS-PAGE.
<b>Sequence</b>	RGRDYEKKNKVCKEFSLGKEDFTSLSLVLYSRKFPSGTFEQVSQLVKEVVSLT EACCAEGADPDCYDTRTSALSAKSCESNSPFPVHPGTAECCTKEGLERKLCM AALKHQPFQEFPTYVEPTNDEICEAFRKDPKEYANQFMWEYSTNYGQAPLSLL VSYTKSYLSMVGSCCTSASPTVCFLKERLQLKHLSELLTTLNVRVCSQYAAAYGE KKSRLSNLIKLAQKVPTADLEDVLPALAEITNILSKCCESASEDCMAKELPEHTV KLCDNLSTKNSKFEDCCQEKTAMDVFVCTYFMPAAQLPELDPVELPTNKDVC DPGNTKVMKYTFELSRRTLPEVFLSKVLEPTLKS LGECDDVEDSTTCFNAK GPLLKKELSSFIDKQGQELCADYSENTFTEYKKKLAERLKAKLPDATPTELAKLV NKHSDFASNCCSINSPPLYCDSEIDAELKNIL
<b>Research Area</b>	Signal Transduction
<b>Source</b>	Yeast
<b>Target Names</b>	GC
<b>Protein Names</b>	Recommended name: Vitamin D-binding protein Short name= DBP Short name= VDB Alternative name(s): Gc-globulin Group-specific component
<b>Expression Region</b>	19-474aa
<b>Notes</b>	Repeated freezing and thawing is not recommended. Store working aliquots at 4°C for up to one week.
<b>Tag Info</b>	N-terminal 6xHis-SUMOSTAR-tagged
<b>Mol. Weight</b>	67.0kDa
<b>Protein Length</b>	Partial
<b>Image</b>	



(Tris-Glycine gel) Discontinuous SDS-PAGE (reduced) with 5% enrichment gel and 15% separation gel.



Based on the SEQUEST from database of Yeast host and target protein, the LC-MS/MS Analysis result of CSB-YP009306HU could indicate that this peptide derived from Yeast-expressed Homo sapiens (Human) GC.



Based on the SEQUEST from database of Yeast host and target protein, the LC-MS/MS Analysis result of CSB-YP009306HU could indicate that this peptide derived from Yeast-expressed Homo sapiens (Human) GC.

### Reconstitution

We recommend that this vial be briefly centrifuged prior to opening to bring the contents to the bottom. Please reconstitute protein in deionized sterile water to a concentration of 0.1-1.0 mg/mL. We recommend to add 5-50% of glycerol (final concentration) and aliquot for long-term storage at -20°C/-80°C. Our default final concentration of glycerol is 50%. Customers could use it as reference.

### Shelf Life

The shelf life is related to many factors, storage state, buffer ingredients, storage temperature and the stability of the protein itself. Generally, the shelf life of liquid form is 6 months at -20°C/-80°C. The shelf life of lyophilized form is 12 months at -20°C/-80°C.