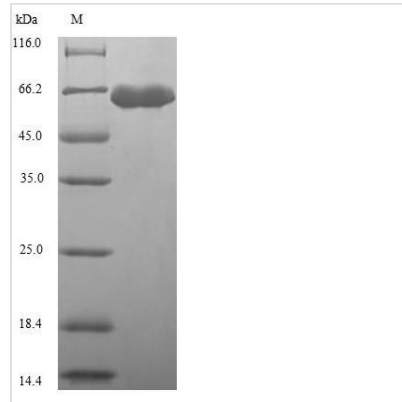




# Recombinant Arabidopsis thaliana Acetolactate synthase, chloroplastic (ALS), partial

<b>Product Code</b>	CSB-YP321540DOA
<b>Relevance</b>	Catalyzes the formation of acetolactate from pyruvate, the first step in valine and isoleucine biosynthesis.
<b>Abbreviation</b>	Recombinant Mouse-ear cress ALS protein, partial
<b>Storage</b>	The shelf life is related to many factors, storage state, buffer ingredients, storage temperature and the stability of the protein itself. Generally, the shelf life of liquid form is 6 months at -20°C/-80°C. The shelf life of lyophilized form is 12 months at -20°C/-80°C.
<b>Uniprot No.</b>	P17597
<b>Product Type</b>	Recombinant Protein
<b>Immunogen Species</b>	Arabidopsis thaliana (Mouse-ear cress)
<b>Purity</b>	Greater than 90% as determined by SDS-PAGE.
<b>Sequence</b>	KGADILVEALERQGVETVFAYPGGASMEIHQALTRSSSIRNVLP RHEQGGVFA AEGYARSSGKPGICIATSGPGATNLVSGGLADALLDSVPLVAITGQVPRRMIGTD AFQETPIVEVTRSITKHNYLVMDVEDIPRIIEEAFFLATSGRPGPVLVDVPKDIQQ QLAIPNWEQAMRLPGYMSRMPKPPEDSHLEQIVRLISESKKPVLYVGGGCLNS SDELGRFVELTGIPVASTLMGLGSYPCDEL SLHMLGMHGTVYANYAVEHSDL LLAFGVRFD DRVTGKLEAFASRAKIVHIDIDSAEIGKKNKTPHVSVC GDVKLALQ GMNKVLENRAEELKLD FGVWRNELNVQKQKFP LSFKTFGEAIPPQYAIKVLDE LTDGKAIISTGVGQHQM WAAQFYNYKKPRQWLSSGGLGAMGFGLPAAIGASV ANPDAIVVDIDGDGSFIMNVQELATIRVENLPVKVLLLNNQH LGMVMQWEDRF YKANRAHTFLGDPAQEDEIFPNMLLFAAACGIPAARVTKKADLREAIQTMLDTP GPYLLDVICPHQEHLVLP MIPSGGTFNDVITEGDGRIKY
<b>Research Area</b>	others
<b>Source</b>	Yeast
<b>Target Names</b>	ALS
<b>Protein Names</b>	Acetohydroxy-acid synthase Protein CHLORSULFURON RESISTANT 1
<b>Expression Region</b>	98-670aa
<b>Notes</b>	Repeated freezing and thawing is not recommended. Store working aliquots at 4°C for up to one week.
<b>Tag Info</b>	N-terminal 6xHis-tagged
<b>Mol. Weight</b>	64.4 kDa
<b>Protein Length</b>	Partial
<b>Image</b>	



(Tris-Glycine gel) Discontinuous SDS-PAGE (reduced) with 5% enrichment gel and 15% separation gel.

### Reconstitution

We recommend that this vial be briefly centrifuged prior to opening to bring the contents to the bottom. Please reconstitute protein in deionized sterile water to a concentration of 0.1-1.0 mg/mL. We recommend to add 5-50% of glycerol (final concentration) and aliquot for long-term storage at -20°C/-80°C. Our default final concentration of glycerol is 50%. Customers could use it as reference.

### Shelf Life

The shelf life is related to many factors, storage state, buffer ingredients, storage temperature and the stability of the protein itself. Generally, the shelf life of liquid form is 6 months at -20°C/-80°C. The shelf life of lyophilized form is 12 months at -20°C/-80°C.