

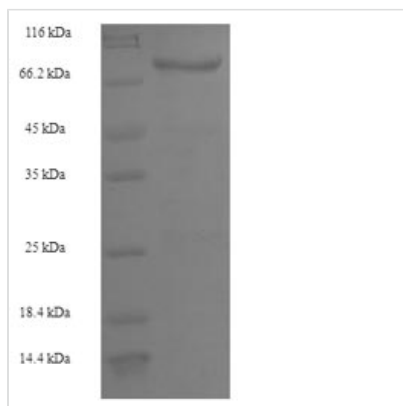


# Recombinant Mouse Transcriptional repressor CTCFL (Ctcf1)

<b>Product Code</b>	CSB-EP006139MO
<b>Relevance</b>	Testis-specific DNA binding protein responsible for insulator function, nuclear architecture and transcriptional control, which probably acts by recruiting epigenetic chromatin modifiers. Plays a key role in gene imprinting in male germline, by participating in the establishment of differential methylation at the IGF2/H19 imprinted control region (ICR). Directly binds the unmethylated H19 ICR and recruits the PRMT7 methyltransferase, leading to methylate histone H4 'Arg-3' to form H4R3me2. This probably leads to recruit de novo DNA methyltransferases at these sites. Ses to act as tumor suppressor. In association with DNMT1 and DNMT3B, involved in activation of BAG1 gene expression by binding to its promoter. Required for dimethylation of H3 lysine 4 (H3K4me2) of MYC and BRCA1 promoters.
<b>Abbreviation</b>	Recombinant Mouse Ctcf1 protein
<b>Storage</b>	The shelf life is related to many factors, storage state, buffer ingredients, storage temperature and the stability of the protein itself. Generally, the shelf life of liquid form is 6 months at -20°C/-80°C. The shelf life of lyophilized form is 12 months at -20°C/-80°C.
<b>Uniprot No.</b>	A2APF3
<b>Alias</b>	Brother of the regulator of imprinted sitesCCCTC-binding factorCTCF paralogCTCF-like protein
<b>Product Type</b>	Recombinant Protein
<b>Immunogen Species</b>	Mus musculus (Mouse)
<b>Purity</b>	≥ 90% as determined by SDS-PAGE.
<b>Sequence</b>	MAAAEVPVPSGYFTQIKEQKLKPGDLEEEKEEDGVQRVEAQEGVVKEVEAEN SCLLLEARAPVESDRRILTLQTVHLESQDVHLQGLGWLSVPHSEELSGTVPEA EGILQLPSVLWLDPEPQLSLQHCVTVSIPEELYPPEELQRIHFHLLRENVLMAE ENPELTPDLDESTALKKPEEDEKDKQLPPQGETDKREERLLLLLEMKPKEGKDDE IVLTISHLSLEEQQDPPAANQTSVPGAKAAKPKRRRQTKGKPKQSFQCDTCPFT SSKLSTFNRHIKIHSNERPHLCHLCLKAFRTVTLLRNHVNTHTGTRPHKCRDCD MAFVTSGELVRHRRYKHTYEKPFKCSLCKYASVEASKMKRHIRSHTGERPFQ CCQCAYASRDSYKLRHMRTHSGEKPYECPTCHVRFTQSGTMKIHIAQKHGE NVPKYECPHCATIIARKSDLRVHLRNLHSQSPEEMKCRYCPAGFHERYALIQH QRTHKNEKKFKCKQCDYACKQERCLKAHMRMHTGEKPFSLACNKHFRQKQ LLTVHLRKYHDPNFVPNLHLCLCKDKRFSRWSNLQRHRKKCDPEHETLAPNK DRRPVTRTQASEGEAGHKEGEPQCPGEQALGHQGEAAGSQSPDHGLTCEIIF NMMDK
<b>Research Area</b>	Others
<b>Source</b>	E.coli



<b>Target Names</b>	Ctcf1
<b>Protein Names</b>	Recommended name: Transcriptional repressor CTCFL Alternative name(s): Brother of the regulator of imprinted sites CCCTC-binding factor CTCF paralog CTCF-like protein
<b>Expression Region</b>	1-636aa
<b>Notes</b>	Repeated freezing and thawing is not recommended. Store working aliquots at 4°C for up to one week.
<b>Tag Info</b>	N-terminal 6xHis-SUMO-tagged
<b>Mol. Weight</b>	89.1kDa
<b>Protein Length</b>	Full Length

**Image**


(Tris-Glycine gel) Discontinuous SDS-PAGE (reduced) with 5% enrichment gel and 15% separation gel.

<b>Reconstitution</b>	We recommend that this vial be briefly centrifuged prior to opening to bring the contents to the bottom. Please reconstitute protein in deionized sterile water to a concentration of 0.1-1.0 mg/mL. We recommend to add 5-50% of glycerol (final concentration) and aliquot for long-term storage at -20°C/-80°C. Our default final concentration of glycerol is 50%. Customers could use it as reference.
<b>Shelf Life</b>	The shelf life is related to many factors, storage state, buffer ingredients, storage temperature and the stability of the protein itself. Generally, the shelf life of liquid form is 6 months at -20°C/-80°C. The shelf life of lyophilized form is 12 months at -20°C/-80°C.