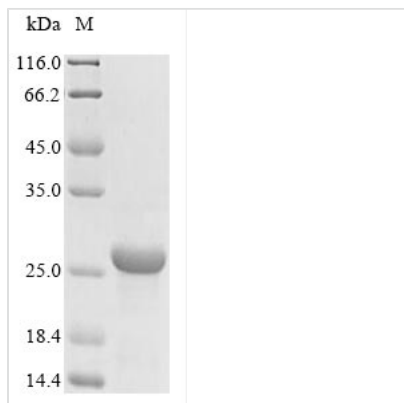


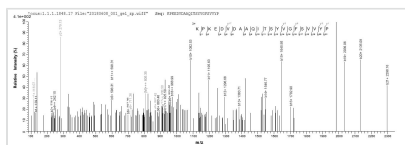


Recombinant Bordetella pertussis Serotype 3 fimbrial subunit (fim3)

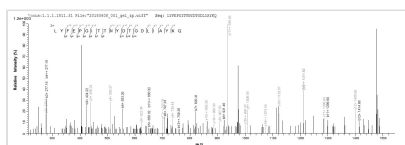
Product Code	CSB-YP322971BUA
Relevance	Bordetella pertussis is the causative agent of whooping cough. An essential step in the disease process is the attachment of the bacteria to the ciliated epithelium of the respiratory tract, enabling the organism to resist normal host-clearance mechanisms. It is unclear which bacterial cell surface component are responsible for adherence but the fimbriae of B.pertussis are prime candidates for being involved in this process.
Abbreviation	Recombinant Bordetella pertussis fim3 protein
Storage	The shelf life is related to many factors, storage state, buffer ingredients, storage temperature and the stability of the protein itself. Generally, the shelf life of liquid form is 6 months at -20°C/-80°C. The shelf life of lyophilized form is 12 months at -20°C/-80°C.
Uniprot No.	P17835
Product Type	Recombinant Protein
Immunogen Species	Bordetella pertussis (strain Tohama I / ATCC BAA-589 / NCTC 13251)
Purity	Greater than 85% as determined by SDS-PAGE.
Sequence	NDGTIVITGSIQDQTCVIEEPSTLNHIKVVQLPKISKNALRNDGDTAGATPFDIKL KECPQALGALKLYFEPGITTNYDTGDLIAYKQTYNASGNGNLSTVSSATKAKGV EFRLANLNGQHIRMGTDKTTQAAQFTTGKVTNGSKSYTLRYLASVYVKKPKEDV DAAQITSYVGFVSVYP
Research Area	Others
Source	Yeast
Target Names	fim3
Protein Names	Recommended name: Serotype 3 fimbrial subunit
Expression Region	26-204aa
Notes	Repeated freezing and thawing is not recommended. Store working aliquots at 4°C for up to one week.
Tag Info	N-terminal 6xHis-tagged
Mol. Weight	21.2 kDa
Protein Length	Full Length of Mature Protein
Image	



(Tris-Glycine gel) Discontinuous SDS-PAGE (reduced) with 5% enrichment gel and 15% separation gel.



Based on the SEQUEST from database of Yeast host and target protein, the LC-MS/MS Analysis result of CSB-YP322971BUA could indicate that this peptide derived from Yeast-expressed *Bordetella pertussis* (strain Tohama I / ATCC BAA-589 / NCTC 13251) fim3.



Based on the SEQUEST from database of Yeast host and target protein, the LC-MS/MS Analysis result of CSB-YP322971BUA could indicate that this peptide derived from Yeast-expressed *Bordetella pertussis* (strain Tohama I / ATCC BAA-589 / NCTC 13251) fim3.

Reconstitution

We recommend that this vial be briefly centrifuged prior to opening to bring the contents to the bottom. Please reconstitute protein in deionized sterile water to a concentration of 0.1-1.0 mg/mL. We recommend to add 5-50% of glycerol (final concentration) and aliquot for long-term storage at -20°C/-80°C. Our default final concentration of glycerol is 50%. Customers could use it as reference.

Shelf Life

The shelf life is related to many factors, storage state, buffer ingredients, storage temperature and the stability of the protein itself. Generally, the shelf life of liquid form is 6 months at -20°C/-80°C. The shelf life of lyophilized form is 12 months at -20°C/-80°C.