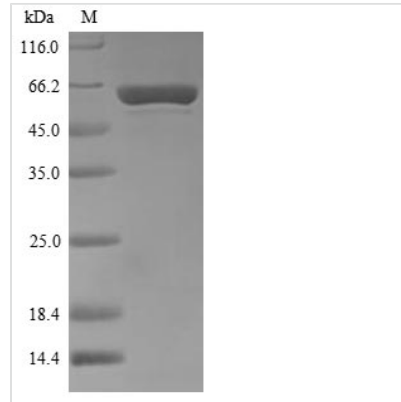




Recombinant *Thermus aquaticus* DNA polymerase I, thermostable (polA), partial

Product Code	CSB-YP323156TNN
Abbreviation	Recombinant <i>Thermus aquaticus</i> polA protein, partial
Storage	The shelf life is related to many factors, storage state, buffer ingredients, storage temperature and the stability of the protein itself. Generally, the shelf life of liquid form is 6 months at -20°C/-80°C. The shelf life of lyophilized form is 12 months at -20°C/-80°C.
Uniprot No.	P19821
Product Type	Recombinant Protein
Immunogen Species	<i>Thermus aquaticus</i>
Purity	Greater than 90% as determined by SDS-PAGE.
Sequence	<p> ESPKALEEAPWPPPEGAFVGFVLSRKEPMWADLLALAAARGGRVHRAPEPYK ALRDLKEARGLLAKDLSVLALREGLGLPPGDDPMLLAYLLDPSNTTPEGVARR YGGEWTEEAGERAALSERLFANLWGRLEGEERLLWLYREVERPLSAVLAHME ATGVRLDVAYLRALSLEVAEEIARLEAEVFRLAGHPFNLNSRDQLERVLFDDELG LPAIGKTEKTGKRSTSAAVLEALREAHPIVEKILQYRELTKLKSTYIDPLPDLIHP RTGRLHTRFNQTATATGRLSSSDPNLQNIPTVPLGQRIRRAFIAEEGWLLVAL DYSQIELRVLAHLSGDENLIRVFQEGRDIHTETASWMFGVPREAVDPLMRRAA KTINFGVLYGMSAHRLSQELAIPYEEAQAFIERYFQSFPKVRWIEKTL EEGRR RGYVETLFGRRRYVPDLEARVKS VREAAERMAFNMPVQGTAAADLMK LAMVKL FPRLEEMGARMMLLQVHDELVLEAPKERAEAVARLAKEVM EGVYPLAVPLEVEV GIGEDWLSAKE </p>
Research Area	Epigenetics and Nuclear Signaling
Source	Yeast
Target Names	polA
Protein Names	Taq polymerase 1 pol1
Expression Region	289-832aa
Notes	Repeated freezing and thawing is not recommended. Store working aliquots at 4°C for up to one week.
Tag Info	N-terminal 6xHis-tagged
Mol. Weight	63.3 kDa
Protein Length	Partial
Image	



(Tris-Glycine gel) Discontinuous SDS-PAGE (reduced) with 5% enrichment gel and 15% separation gel.

Reconstitution

We recommend that this vial be briefly centrifuged prior to opening to bring the contents to the bottom. Please reconstitute protein in deionized sterile water to a concentration of 0.1-1.0 mg/mL. We recommend to add 5-50% of glycerol (final concentration) and aliquot for long-term storage at -20°C/-80°C. Our default final concentration of glycerol is 50%. Customers could use it as reference.

Shelf Life

The shelf life is related to many factors, storage state, buffer ingredients, storage temperature and the stability of the protein itself. Generally, the shelf life of liquid form is 6 months at -20°C/-80°C. The shelf life of lyophilized form is 12 months at -20°C/-80°C.