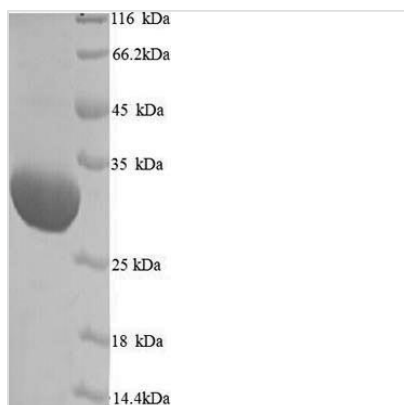




# Recombinant Human rhinovirus 1A Genome polyprotein, partial

<b>Product Code</b>	CSB-YP326367HQA
<b>Abbreviation</b>	Recombinant Human rhinovirus 1A Genome polyprotein, partial
<b>Storage</b>	The shelf life is related to many factors, storage state, buffer ingredients, storage temperature and the stability of the protein itself. Generally, the shelf life of liquid form is 6 months at -20°C/-80°C. The shelf life of lyophilized form is 12 months at -20°C/-80°C.
<b>Uniprot No.</b>	P23008
<b>Product Type</b>	Recombinant Protein
<b>Immunogen Species</b>	Human rhinovirus 1A (HRV-1A)
<b>Purity</b>	≥ 90% as determined by SDS-PAGE.
<b>Sequence</b>	NPVENYIDEVLNEVLVVPNIKESHHTTSNSAPLLDAAETGHTSNVQPEDAIETR YVITSQTRDEMSIESFLGRSGCVHISRIKVDYTDYNGQDINF TKWKITLQEMAQI RRKFELFTYVRFDSEITLVPCIAGRGDIGHIVMQMYVPPGAPIPSKRNDFSW QSGTNMSIFWQHGGPFRFSLPFLSIASAYMFYDGYDGDNTSSKYGSVVTN DMGTICSRIVTEKQKHSVITTHIYHKAKHTKAWCPRPPRAVPYTHSHVTNYM PETGDVTTAIVRRNTITTA
<b>Research Area</b>	Others
<b>Source</b>	Yeast
<b>Protein Names</b>	Recommended name: Genome polyprotein Cleaved into the following 5 chains: 1. Protein VP0 Alternative name(s): VP4-VP2 Protein VP4 Alternative name(s): P1A Virion protein 4 Protein VP2 Alternative name(s): P1B Virion protein 2 Protein VP3 Alternative name(s): P1C Virion protein 3 Protein VP1 Alternative name(s): P1D Virion protein 1
<b>Expression Region</b>	571-857aa
<b>Notes</b>	Repeated freezing and thawing is not recommended. Store working aliquots at 4°C for up to one week.
<b>Tag Info</b>	N-terminal 6xHis-tagged
<b>Mol. Weight</b>	34.6 kDa
<b>Protein Length</b>	Partial
<b>Image</b>	



(Tris-Glycine gel) Discontinuous SDS-PAGE (reduced) with 5% enrichment gel and 15% separation gel.

### Reconstitution

We recommend that this vial be briefly centrifuged prior to opening to bring the contents to the bottom. Please reconstitute protein in deionized sterile water to a concentration of 0.1-1.0 mg/mL. We recommend to add 5-50% of glycerol (final concentration) and aliquot for long-term storage at -20°C/-80°C. Our default final concentration of glycerol is 50%. Customers could use it as reference.

### Shelf Life

The shelf life is related to many factors, storage state, buffer ingredients, storage temperature and the stability of the protein itself. Generally, the shelf life of liquid form is 6 months at -20°C/-80°C. The shelf life of lyophilized form is 12 months at -20°C/-80°C.