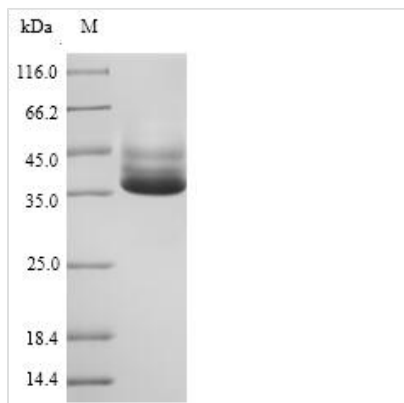


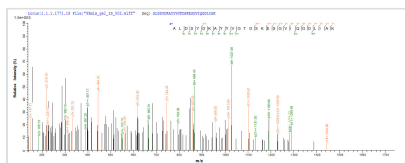


Recombinant Salmonella typhimurium D-galactose-binding periplasmic protein (mglB)

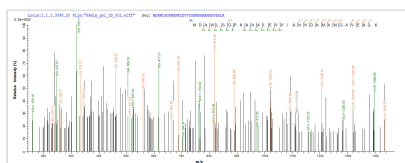
Product Code	CSB-YP326441SXB
Relevance	This protein is involved in the active transport of galactose and glucose. It plays a role in the chemotaxis towards the two sugars by interacting with the trg chemoreceptor
Abbreviation	Recombinant Salmonella typhimurium mglB protein
Storage	The shelf life is related to many factors, storage state, buffer ingredients, storage temperature and the stability of the protein itself. Generally, the shelf life of liquid form is 6 months at -20°C/-80°C. The shelf life of lyophilized form is 12 months at -20°C/-80°C.
Uniprot No.	P23905
Alias	D-galactose/ D-glucose-binding protein
Product Type	Recombinant Protein
Immunogen Species	Salmonella typhimurium (strain LT2 / SGSC1412 / ATCC 700720)
Purity	≥ 90% as determined by SDS-PAGE.
Sequence	ADTRIGVTIYKYDDNFMSVVRKAIEKDGKSAPDVQLLMNDSQNDQSKQNDQID VLLAKGVKALAINLVDPAAGTVIEKARGQNVVFFNKEPSRKALDSYDKAYY VGTDSKESGVIQGDLIAKHWQANQGWDLNKDGKIQYVLLKGEPGHPDAEART TYVVKELNDKGIQTEQLALDTAMWDTAQAKDKMDAWLSGPNANKIEVVIANND AMAMGAVEALKAHNKSSIPVFGVDALPEALALVKSAMAGTVLNDANNQAKA TFDLAKNLAEGKGAADGTSWKIENKIVRVPYVGVGVDKDNLSEFTQK
Research Area	others
Source	Yeast
Target Names	mglB
Protein Names	Recommended name: D-galactose-binding periplasmic protein Short name= GBP Alternative name(s): D-galactose/ D-glucose-binding protein Short name= GGBP
Expression Region	24-332aa
Notes	Repeated freezing and thawing is not recommended. Store working aliquots at 4°C for up to one week.
Tag Info	N-terminal 6xHis-tagged
Mol. Weight	35.4kDa
Protein Length	Full Length of Mature Protein
Image	



(Tris-Glycine gel) Discontinuous SDS-PAGE (reduced) with 5% enrichment gel and 15% separation gel.



Based on the SEQUEST from database of Yeast host and target protein, the LC-MS/MS Analysis result of CSB-YP326441SXB could indicate that this peptide derived from Yeast-expressed *Salmonella typhimurium* (strain LT2 / SGSC1412 / ATCC 700720) mgIB.



Based on the SEQUEST from database of Yeast host and target protein, the LC-MS/MS Analysis result of CSB-YP326441SXB could indicate that this peptide derived from Yeast-expressed *Salmonella typhimurium* (strain LT2 / SGSC1412 / ATCC 700720) mgIB.

Reconstitution

We recommend that this vial be briefly centrifuged prior to opening to bring the contents to the bottom. Please reconstitute protein in deionized sterile water to a concentration of 0.1-1.0 mg/mL. We recommend to add 5-50% of glycerol (final concentration) and aliquot for long-term storage at -20°C/-80°C. Our default final concentration of glycerol is 50%. Customers could use it as reference.

Shelf Life

The shelf life is related to many factors, storage state, buffer ingredients, storage temperature and the stability of the protein itself.

Generally, the shelf life of liquid form is 6 months at -20°C/-80°C. The shelf life of lyophilized form is 12 months at -20°C/-80°C.