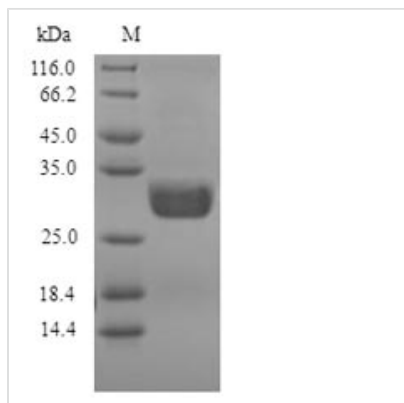




# Recombinant Penicillium citrinum Nuclease P1

|                          |  |
|--------------------------|--|
| <b>Product Code</b>      | CSB-YP328459PEU  |
| <b>Relevance</b>         | Hydrolyzes only single-stranded DNA and RNA without apparent specificity for bases.  |
| <b>Abbreviation</b>      | Recombinant Penicillium citrinum Nuclease P1 protein   |
| <b>Storage</b>           | The shelf life is related to many factors, storage state, buffer ingredients, storage temperature and the stability of the protein itself. Generally, the shelf life of liquid form is 6 months at -20°C/-80°C. The shelf life of lyophilized form is 12 months at -20°C/-80°C.                    |
| <b>Uniprot No.</b>       | P24289   |
| <b>Alias</b>             | Deoxyribonuclease P1 Endonuclease P1   |
| <b>Product Type</b>      | Recombinant Protein  |
| <b>Immunogen Species</b> | Penicillium citrinum   |
| <b>Purity</b>            | ≥ 90% as determined by SDS-PAGE.   |
| <b>Sequence</b>          | WGALGHATVAYVAQHYVSPEAASWAQGILGSSSSSYLASIASWADEYRLTSA<br>GKWSASLHFIDAEDNPPTNCNVDYERDCGSSGCSISAIANYTQRVSDSSLSSE<br>NHAELRFLVHFIGDMTQPLHDEAYAVGGNKINVTFDGYHDNLHSDWDTYMP<br>QKLIGGHALSDAESWAKTLVQNIESGNYYTAQAIGWIKGDNISEPITTATRWASD<br>ANALVCTVVMPHGAAALQTGDLYPTYDSDVIDTIELQIAKGGYRLANWINEIHG<br>SEIAK |
| <b>Research Area</b>     | Others   |
| <b>Source</b>            | Yeast  |
| <b>Protein Names</b>     | Recommended name: Nuclease P1 EC= 3.1.30.1 Alternative name(s):<br>Deoxyribonuclease P1 Endonuclease P1  |
| <b>Expression Region</b> | 1-270aa  |
| <b>Notes</b>             | Repeated freezing and thawing is not recommended. Store working aliquots at 4°C for up to one week.  |
| <b>Tag Info</b>          | N-terminal 6xHis-tagged  |
| <b>Mol. Weight</b>       | 31.2kDa  |
| <b>Protein Length</b>    | Full Length  |
| <b>Image</b>             |  |



(Tris-Glycine gel) Discontinuous SDS-PAGE (reduced) with 5% enrichment gel and 15% separation gel.

### Reconstitution

We recommend that this vial be briefly centrifuged prior to opening to bring the contents to the bottom. Please reconstitute protein in deionized sterile water to a concentration of 0.1-1.0 mg/mL. We recommend to add 5-50% of glycerol (final concentration) and aliquot for long-term storage at  $-20^{\circ}\text{C}/-80^{\circ}\text{C}$ . Our default final concentration of glycerol is 50%. Customers could use it as reference.

### Shelf Life

The shelf life is related to many factors, storage state, buffer ingredients, storage temperature and the stability of the protein itself. Generally, the shelf life of liquid form is 6 months at  $-20^{\circ}\text{C}/-80^{\circ}\text{C}$ . The shelf life of lyophilized form is 12 months at  $-20^{\circ}\text{C}/-80^{\circ}\text{C}$ .