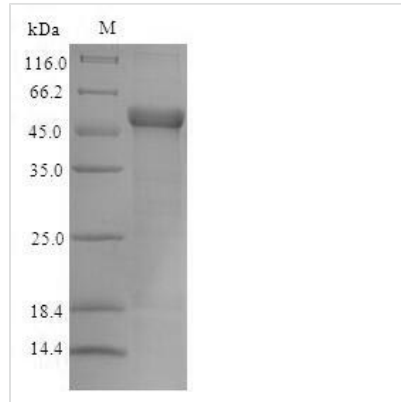


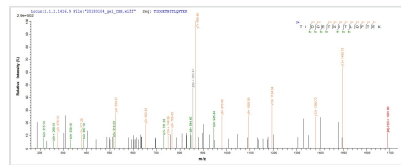


Recombinant Escherichia coli CFA/I fimbrial subunit E (cfaE)

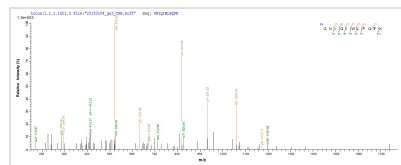
Product Code	CSB-EP328563ENL
Abbreviation	Recombinant E.coli cfaE protein
Storage	The shelf life is related to many factors, storage state, buffer ingredients, storage temperature and the stability of the protein itself. Generally, the shelf life of liquid form is 6 months at -20°C/-80°C. The shelf life of lyophilized form is 12 months at -20°C/-80°C.
Uniprot No.	P25734
Alias	Colonization factor antigen I subunit E
Product Type	Recombinant Protein
Immunogen Species	Escherichia coli
Purity	≥ 90% as determined by SDS-PAGE.
Sequence	MNKILFIFTLFFSSGFFTFVAVSADKNPGSENMTNTIGPHDRGGSSPIYNILNSYL TAYNGSHHLYDRMSFLCLSSQNTLNGACPSSDAPGTATIDGETNITLQFTEKR SLIKRELQIKGYKQFLFKNANCP SKLALNSSHFQCNREQASGATLSLYIPAGEL NKLPGGGVWNAVLKLNVKRRYDTTYGTYTINITVNLTDKGNIQIWLPQFKSNAR VDLNLRPTGGGTYIGRNSVDMCFYDGYSTNSSSLEIRFQDDNSKSDGKFYLKK INDDSKELVYTL SLLL LAGKNLTPTNGQALNINTASLETNWNRITAVTMPEISVPV LCWPGRLQLDAKVKNPEAGQYMGNIKITFTPSSQTL
Source	E.coli
Target Names	cfaE
Protein Names	Recommended name: CFA/I fimbrial subunit E Alternative name(s): Colonization factor antigen I subunit E
Expression Region	1-360aa
Notes	Repeated freezing and thawing is not recommended. Store working aliquots at 4°C for up to one week.
Tag Info	N-terminal 6xHis-SUMO-tagged
Mol. Weight	55.9kDa
Protein Length	Full Length
Image	



(Tris-Glycine gel) Discontinuous SDS-PAGE (reduced) with 5% enrichment gel and 15% separation gel.



Based on the SEQUEST from database of E.coli host and target protein, the LC-MS/MS Analysis result of CSB-EP328563ENL could indicate that this peptide derived from E.coli-expressed Escherichia coli cfaE.



Based on the SEQUEST from database of E.coli host and target protein, the LC-MS/MS Analysis result of CSB-EP328563ENL could indicate that this peptide derived from E.coli-expressed Escherichia coli cfaE.

Reconstitution

We recommend that this vial be briefly centrifuged prior to opening to bring the contents to the bottom. Please reconstitute protein in deionized sterile water to a concentration of 0.1-1.0 mg/mL. We recommend to add 5-50% of glycerol (final concentration) and aliquot for long-term storage at -20°C/-80°C. Our default final concentration of glycerol is 50%. Customers could use it as reference.

Shelf Life

The shelf life is related to many factors, storage state, buffer ingredients, storage temperature and the stability of the protein itself. Generally, the shelf life of liquid form is 6 months at -20°C/-80°C. The shelf life of lyophilized form is 12 months at -20°C/-80°C.