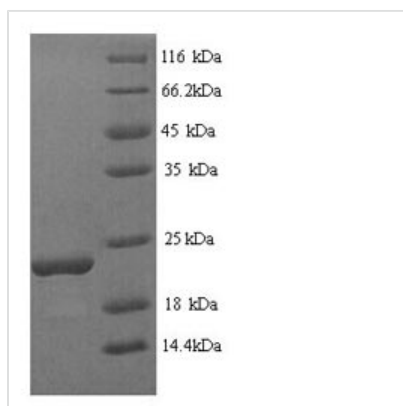




Recombinant Glycine max Stress-induced protein SAM22 (PR-10)

Product Code	CSB-YP333215GGV
Abbreviation	Recombinant Glycine max PR-10 protein
Storage	The shelf life is related to many factors, storage state, buffer ingredients, storage temperature and the stability of the protein itself. Generally, the shelf life of liquid form is 6 months at -20°C/-80°C. The shelf life of lyophilized form is 12 months at -20°C/-80°C.
Uniprot No.	P26987
Product Type	Recombinant Protein
Immunogen Species	Glycine max (Soybean) (Glycine hispida)
Purity	≥ 90% as determined by SDS-PAGE.
Sequence	MGVFTFEDEINSPVAPATLYKALVTDADNVIPKALDSFKSVENVEGNGGPGTIK KITFLEDGETKFLVHKIESIDEANLGYSSVVGGAALPDTAEKITFDSKLVAGPN GGSAGKLTVKYETKGDAPNQDELKTGKAKADALFKAIEAYLLAHPDYN
Source	Yeast
Protein Names	Recommended name: Stress-induced protein SAM22 Alternative name(s): Starvation-associated message 22 Allergen= Gly m 4
Expression Region	1-158aa
Notes	Repeated freezing and thawing is not recommended. Store working aliquots at 4°C for up to one week.
Tag Info	N-terminal 6xHis-tagged
Mol. Weight	18.8kDa
Protein Length	Full Length

Image



(Tris-Glycine gel) Discontinuous SDS-PAGE (reduced) with 5% enrichment gel and 15% separation gel.

Reconstitution

We recommend that this vial be briefly centrifuged prior to opening to bring the contents to the bottom. Please reconstitute protein in deionized sterile water to a concentration of 0.1-1.0 mg/mL. We recommend to add 5-50% of glycerol (final



concentration) and aliquot for long-term storage at -20°C/-80°C. Our default final concentration of glycerol is 50%. Customers could use it as reference.

Shelf Life

The shelf life is related to many factors, storage state, buffer ingredients, storage temperature and the stability of the protein itself.

Generally, the shelf life of liquid form is 6 months at -20°C/-80°C. The shelf life of lyophilized form is 12 months at -20°C/-80°C.