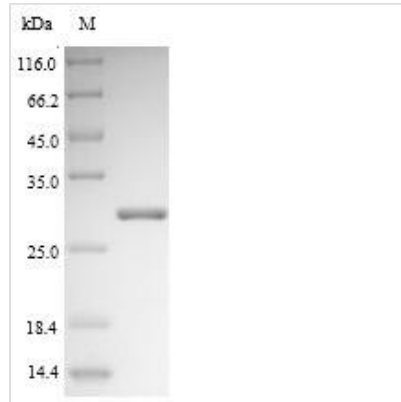


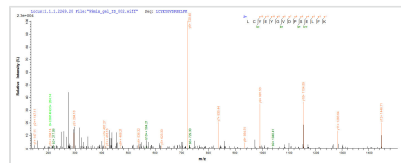


Recombinant *Saccharomyces cerevisiae* 2-deoxyglucose-6-phosphate phosphatase 1 (DOG1)

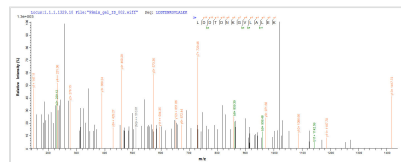
Product Code	CSB-YP336491SVG
Relevance	Active on 2-DOG-6P, also very active on fructose-1P.
Abbreviation	Recombinant <i>Saccharomyces cerevisiae</i> DOG1 protein
Storage	The shelf life is related to many factors, storage state, buffer ingredients, storage temperature and the stability of the protein itself. Generally, the shelf life of liquid form is 6 months at -20°C/-80°C. The shelf life of lyophilized form is 12 months at -20°C/-80°C.
Uniprot No.	P38774
Product Type	Recombinant Protein
Immunogen Species	<i>Saccharomyces cerevisiae</i> (strain ATCC 204508 / S288c) (Baker's yeast)
Purity	Greater than 90% as determined by SDS-PAGE.
Sequence	MAEFSADLCLFDLDGTIVSTTVAAEKAWTKLCYEYGVDPSELFKHSHGARTQE VLRRFFPKLDDTDNKGVLALEKDIAHSYLDTVSLIPGAENLLLSLDVDTETQKKL PERKWAIVTSGSPYLAFSWFETILKNVGKPKVFITGFDVKNGKPDPEGYSRAR DLLRQDLQLTGKQDLKYVVFEDAPVGIKAGKAMGAITVGITSSYDKSVLFDAGA DYVVCDLTQVSVVKNENGVIVQVNNPLTRA
Research Area	others
Source	Yeast
Target Names	DOG1
Protein Names	Recommended name: 2-deoxyglucose-6-phosphate phosphatase 1 Short name= 2-DOG-6-P 1 Short name= 2-deoxyglucose-6-phosphatase 1 EC= 3.1.3.68
Expression Region	1-246aa
Notes	Repeated freezing and thawing is not recommended. Store working aliquots at 4°C for up to one week.
Tag Info	N-terminal 6xHis-tagged
Mol. Weight	29.1kDa
Protein Length	Full Length
Image	



(Tris-Glycine gel) Discontinuous SDS-PAGE (reduced) with 5% enrichment gel and 15% separation gel.



Based on the SEQUEST from database of Yeast host and target protein, the LC-MS/MS Analysis result of CSB-YP336491SVG could indicate that this peptide derived from Yeast-expressed *Saccharomyces cerevisiae* (strain ATCC 204508 / S288c) (Baker's yeast) DOG1.



Based on the SEQUEST from database of Yeast host and target protein, the LC-MS/MS Analysis result of CSB-YP336491SVG could indicate that this peptide derived from Yeast-expressed *Saccharomyces cerevisiae* (strain ATCC 204508 / S288c) (Baker's yeast) DOG1.

Reconstitution

We recommend that this vial be briefly centrifuged prior to opening to bring the contents to the bottom. Please reconstitute protein in deionized sterile water to a concentration of 0.1-1.0 mg/mL. We recommend to add 5-50% of glycerol (final concentration) and aliquot for long-term storage at -20°C/-80°C. Our default final concentration of glycerol is 50%. Customers could use it as reference.

Shelf Life

The shelf life is related to many factors, storage state, buffer ingredients, storage temperature and the stability of the protein itself.

Generally, the shelf life of liquid form is 6 months at -20°C/-80°C. The shelf life of lyophilized form is 12 months at -20°C/-80°C.