

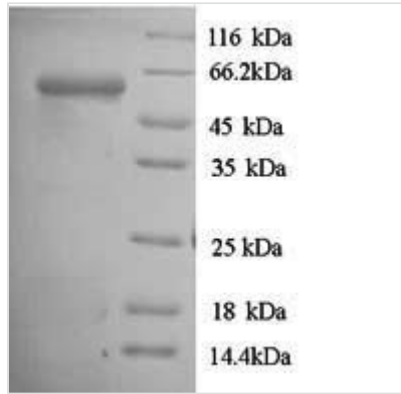


# Recombinant Porphyromonas gingivalis Gingipain R1 (rgpA), partial

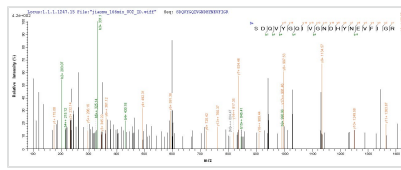
<b>Product Code</b>	CSB-YP338957PQP
<b>Relevance</b>	Thiol protease which is believed to participate in intracellular degradation and turnover of proteins. Its proteolytic activity is a major factor in both periodontal tissue destruction and in bacterial host defense mechanisms. Activates complement C3 and C5.
<b>Abbreviation</b>	Recombinant Porphyromonas gingivalis rgpA protein, partial
<b>Storage</b>	The shelf life is related to many factors, storage state, buffer ingredients, storage temperature and the stability of the protein itself. Generally, the shelf life of liquid form is 6 months at -20°C/-80°C. The shelf life of lyophilized form is 12 months at -20°C/-80°C.
<b>Uniprot No.</b>	P28784
<b>Product Type</b>	Recombinant Proteins
<b>Immunogen Species</b>	Porphyromonas gingivalis
<b>Purity</b>	Greater than 90% as determined by SDS-PAGE. Greater than 90% as determined by SEC-HPLC.
<b>Sequence</b>	YTPVEEKQNGRMIVIVAKKYEGDIKDFVDWKNQRGLRTEVKVAEDIASPV TAN AIQQFVKQEYEKEGNDLTYVLLVGDHKDIPAKITPGIKSDQVYGQIVGNDHYNE VFIGRFSCESKEDLKTQIDRTIHYERNITTEDKWLGGALCIASAEAGGPSADNGE SDIQHENVIANLLTQYGYTKIIKCYDPGVTPKNIIDAFNGGISLVNYTGHGSETA WGTSHFGTTHVKQLTNSNQLPFIFDVACVNGDFLFSMPCFAEALMRAQKDGK PTGTVAIIASTINQSWASPMRGQDEMNEILCEKHPNNIKRTFGGVTMNGMFAM VEKYKKDGEKMLDTWTVFGDPSLLVRTLVP TKMQVTAPAQINLT DASVNVSCD YNGAIATISANGKMFSGSAVVENG TATINLTGLTNESTLTLTVVGYNKETVIKTINT NGEPNPYQPVS NLTATTQGQKVT LKWDAPSTKTNATTNTARSVDGIRELVLLS VSDAPELLRS
<b>Research Area</b>	Others
<b>Source</b>	Yeast
<b>Target Names</b>	rgpA
<b>Protein Names</b>	Recommended name: Gingipain R1 EC= 3.4.22.37 Alternative name(s): Arg-gingipain Gingipain 1 RGP-1
<b>Expression Region</b>	228-720aa
<b>Notes</b>	Repeated freezing and thawing is not recommended. Store working aliquots at 4°C for up to one week.
<b>Tag Info</b>	N-terminal 6xHis-tagged
<b>Mol. Weight</b>	56.0kDa
<b>Protein Length</b>	Partial



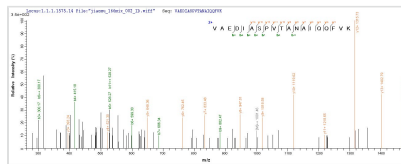
**Image**



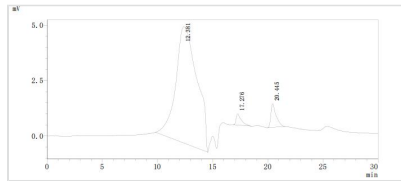
(Tris-Glycine gel) Discontinuous SDS-PAGE (reduced) with 5% enrichment gel and 15% separation gel.



Based on the SEQUEST from database of Yeast host and target protein, the LC-MS/MS Analysis result of CSB-YP338957PQP could indicate that this peptide derived from Yeast-expressed Porphyromonas gingivalis rgpA.



Based on the SEQUEST from database of Yeast host and target protein, the LC-MS/MS Analysis result of CSB-YP338957PQP could indicate that this peptide derived from Yeast-expressed Porphyromonas gingivalis rgpA.



The purity of rgpA was greater than 90% as determined by SEC-HPLC

**Shelf Life**

The shelf life is related to many factors, storage state, buffer ingredients, storage temperature and the stability of the protein itself. Generally, the shelf life of liquid form is 6 months at -20°C/-80°C. The shelf life of lyophilized form is 12 months at -20°C/-80°C.