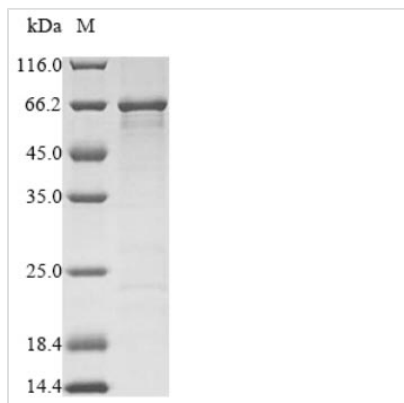


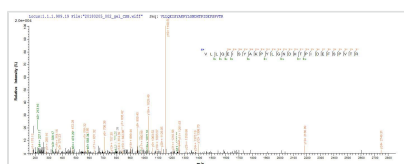


# Recombinant Clostridium botulinum Botulinum neurotoxin type F (botF), partial

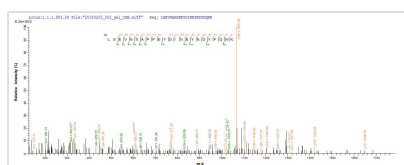
<b>Product Code</b>	CSB-EP341192CLQ
<b>Relevance</b>	Botulinum toxin acts by inhibiting neurotransmitter release. It binds to peripheral neuronal synapses, is internalized and moves by retrograde transport up the axon into the spinal cord where it can move between postsynaptic and presynaptic neurons. It inhibits neurotransmitter release by acting as a zinc endopeptidase that catalyzes the hydrolysis of the '58-Gln- -Lys-59' bond of synaptobrevins-1 and -2.
<b>Abbreviation</b>	Recombinant Clostridium botulinum botF protein, partial
<b>Storage</b>	The shelf life is related to many factors, storage state, buffer ingredients, storage temperature and the stability of the protein itself. Generally, the shelf life of liquid form is 6 months at -20°C/-80°C. The shelf life of lyophilized form is 12 months at -20°C/-80°C.
<b>Uniprot No.</b>	P30996
<b>Alias</b>	Bontoxilysin-F
<b>Product Type</b>	Recombinant Protein
<b>Immunogen Species</b>	Clostridium botulinum
<b>Purity</b>	≥ 90% as determined by SDS-PAGE.
<b>Sequence</b>	MPVAINSFNYNDPVNDDTILYMQIPYEEKSKKYYKA FEIMRNVWIIPERN TIGTN PSDFDPPASLKN GSSAYYDPNYLTTDAEKDRYLKTTIKLFRINSNPAGKVLLQ EISYAKPYLGN DHTPIDEFSPVTRTTSVNIKLSTNVESM LLLV LGAGPDIFE SCCYPVRKLID PDVVYDPSNYGFGSINIVTFSPEY EYTFNDISGGHNSSTESFIA DPAISLAHEL IHALHGLYGARGVTYEETIEVKQAPLMIAEKPIRLEEF LTFGGQDL NIITSAMKEKI YNNLLANYEKIATRLSEVNSAPPEYDINEYKDYFQWKYGLDKNA DGSYTVNENK FNEIYKKLYSFTESDLANKFKVKCRNTYFIKYEF LKVPNLLDDDI YTVSEGFNIGN LAVNNRGQSIKLNPKIIDSIPDKGLVEKIVKFKCKSVIPRK
<b>Source</b>	E.coli
<b>Target Names</b>	botF
<b>Expression Region</b>	1-436aa
<b>Notes</b>	Repeated freezing and thawing is not recommended. Store working aliquots at 4°C for up to one week.
<b>Tag Info</b>	N-terminal 6xHis-tagged
<b>Mol. Weight</b>	53.6kDa
<b>Protein Length</b>	Partial
<b>Image</b>	



(Tris-Glycine gel) Discontinuous SDS-PAGE (reduced) with 5% enrichment gel and 15% separation gel.



Based on the SEQUEST from database of E.coli host and target protein, the LC-MS/MS Analysis result of CSB-EP341192CLQ could indicate that this peptide derived from E.coli-expressed Clostridium botulinum botF.



Based on the SEQUEST from database of E.coli host and target protein, the LC-MS/MS Analysis result of CSB-EP341192CLQ could indicate that this peptide derived from E.coli-expressed Clostridium botulinum botF.

### Reconstitution

We recommend that this vial be briefly centrifuged prior to opening to bring the contents to the bottom. Please reconstitute protein in deionized sterile water to a concentration of 0.1-1.0 mg/mL. We recommend to add 5-50% of glycerol (final concentration) and aliquot for long-term storage at -20°C/-80°C. Our default final concentration of glycerol is 50%. Customers could use it as reference.

### Shelf Life

The shelf life is related to many factors, storage state, buffer ingredients, storage temperature and the stability of the protein itself. Generally, the shelf life of liquid form is 6 months at -20°C/-80°C. The shelf life of lyophilized form is 12 months at -20°C/-80°C.