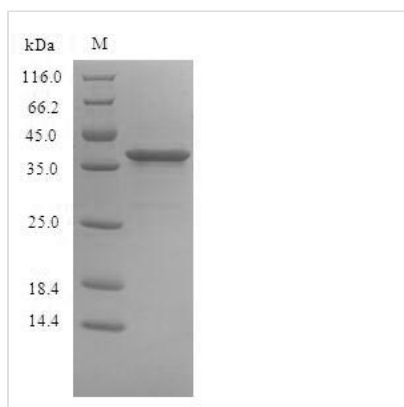




# Recombinant Human Signal-regulatory protein beta-1 (SIRPB1), partial

<b>Product Code</b>	CSB-YP021335HU
<b>Relevance</b>	Immunoglobulin-like cell surface receptor involved in the negative regulation of receptor tyrosine kinase-coupled signaling processes. Participates also in the recruitment of tyrosine kinase SYK.
<b>Abbreviation</b>	Recombinant Human SIRPB1 protein, partial
<b>Storage</b>	The shelf life is related to many factors, storage state, buffer ingredients, storage temperature and the stability of the protein itself. Generally, the shelf life of liquid form is 6 months at -20°C/-80°C. The shelf life of lyophilized form is 12 months at -20°C/-80°C.
<b>Uniprot No.</b>	O00241
<b>Alias</b>	SIRP-beta-1 Alternative name(s): CD172 antigen-like family member B CD_antigen: CD172b
<b>Product Type</b>	Recombinant Protein
<b>Immunogen Species</b>	Homo sapiens (Human)
<b>Purity</b>	≥ 90% as determined by SDS-PAGE.
<b>Sequence</b>	EDELQVIQPEKSVSVAAGESATLRCAMTSLIPVGPIMWFRGAGAGRELIYNQK EGHFPRVTTVSELTKRNNLDFSISISNITPADAGTYCVKFRKGSPDDVEFKSG AGTELSVRAKPSAPVVSGPAVRATPEHTVSFTCESHGFSPRDITLKWFKNGNE LSDFQTNVDPAGDSVSYSIHSTARVVLTRGDVHSQVICEIAHITLQGDLRGTA NLSEAIRVPPTLEVTQQPMRAENQANVTCQVSNFYPRGLQLTWLENGNVSRT ETASTLIENKDGTYNWMSWLLVNTCAHRDDVLTQVEHDGQQAVSKSYALE ISAHQKEHGSDITHEAALAPTAPL
<b>Research Area</b>	Others
<b>Source</b>	Yeast
<b>Target Names</b>	SIRPB1
<b>Protein Names</b>	Recommended name: Signal-regulatory protein beta-1 Short name= SIRP-beta-1 Alternative name(s): CD172 antigen-like family member B CD_antigen= CD172b
<b>Expression Region</b>	30-371aa
<b>Notes</b>	Repeated freezing and thawing is not recommended. Store working aliquots at 4°C for up to one week.
<b>Tag Info</b>	N-terminal 6xHis-tagged
<b>Mol. Weight</b>	39.3kDa
<b>Protein Length</b>	Extracellular Domain
<b>Image</b>	



(Tris-Glycine gel) Discontinuous SDS-PAGE (reduced) with 5% enrichment gel and 15% separation gel.

### Reconstitution

We recommend that this vial be briefly centrifuged prior to opening to bring the contents to the bottom. Please reconstitute protein in deionized sterile water to a concentration of 0.1-1.0 mg/mL. We recommend to add 5-50% of glycerol (final concentration) and aliquot for long-term storage at -20°C/-80°C. Our default final concentration of glycerol is 50%. Customers could use it as reference.

### Shelf Life

The shelf life is related to many factors, storage state, buffer ingredients, storage temperature and the stability of the protein itself. Generally, the shelf life of liquid form is 6 months at -20°C/-80°C. The shelf life of lyophilized form is 12 months at -20°C/-80°C.