



Recombinant Mouse Ubiquitin-protein ligase E3A (Ube3a), partial

Product Code	CSB-YP025488MO
Relevance	E3 ubiquitin-protein ligase which accepts ubiquitin from an E2 ubiquitin-conjugating enzyme in the form of a thioester and transfers it to its substrates. Several substrates have been identified including the RAD23A and RAD23B, MCM7 (which is involved in DNA replication), annexin A1, the PML tumor suppressor, and the cell cycle regulator CDKN1B. Additionally, may function as a cellular quality control ubiquitin ligase by helping the degradation of the Cytoplasmic domain misfolded proteins. Finally, UBE3A also promotes its own degradation in vivo (By similarity). Plays an important role in the regulation of the circadian clock: involved in the ubiquitination of the core clock component ARNTL/BMAL1, leading to its proteasomal degradation (PubMed:24728990).
Abbreviation	Recombinant Mouse Ube3a protein, partial
Storage	The shelf life is related to many factors, storage state, buffer ingredients, storage temperature and the stability of the protein itself. Generally, the shelf life of liquid form is 6 months at -20°C/-80°C. The shelf life of lyophilized form is 12 months at -20°C/-80°C.
Uniprot No.	O08759
Alias	Oncogenic protein-associated protein E6-AP
Product Type	Recombinant Protein
Immunogen Species	Mus musculus (Mouse)
Purity	Greater than 90% as determined by SDS-PAGE.
Sequence	NPADLKKQLYVEFEQGVDEGGVSKEFFQLVVEEIFNPDIGMFTYDEATKLF WFNPSSFETEGQFTLIGIVLGLAIYNNCILDVHFPMVVYRKLKMGKKGTFRDLGD SHPVLYQSLKDLLEYEGSVEDDMMITFQISQTDLFGNPMMYDLKENGDKIPITN ENRKEFVNLYSDYILNKSVEKQFKAFRRGFHMTNESPLKYLFRPEEIELLIG SRNLDFQALEETTEYDGGYTRESVVIREFWIVHSFTDEQKRLFLQFTTGDR APVGGGLGKLMIAKNGPDTERLPTSHTCFNVLLLPEYSSKEKLLKERLLKAITYA KFGML
Research Area	Epigenetics and Nuclear Signaling
Source	Yeast
Target Names	Ube3a
Protein Names	Recommended name: Ubiquitin-protein ligase E3A EC= 6.3.2.-Alternative name(s): Oncogenic protein-associated protein E6-AP
Expression Region	542-870aa
Notes	Repeated freezing and thawing is not recommended. Store working aliquots at 4°C for up to one week.

**Tag Info**

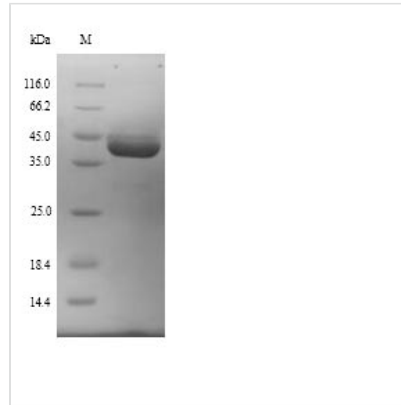
N-terminal 6xHis-tagged

Mol. Weight

39.9kDa

Protein Length

Partial

Image

(Tris-Glycine gel) Discontinuous SDS-PAGE (reduced) with 5% enrichment gel and 15% separation gel.

Reconstitution

We recommend that this vial be briefly centrifuged prior to opening to bring the contents to the bottom. Please reconstitute protein in deionized sterile water to a concentration of 0.1-1.0 mg/mL. We recommend to add 5-50% of glycerol (final concentration) and aliquot for long-term storage at -20°C/-80°C. Our default final concentration of glycerol is 50%. Customers could use it as reference.

Shelf Life

The shelf life is related to many factors, storage state, buffer ingredients, storage temperature and the stability of the protein itself.

Generally, the shelf life of liquid form is 6 months at -20°C/-80°C. The shelf life of lyophilized form is 12 months at -20°C/-80°C.