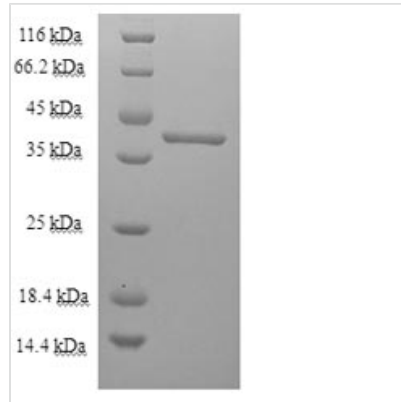




Recombinant Toxocara canis 26 kDa secreted antigen (TES-26)

Product Code	CSB-EP347478THA
Relevance	Binds phosphatidylethanolamine.
Abbreviation	Recombinant Toxocara canis TES-26 protein
Storage	The shelf life is related to many factors, storage state, buffer ingredients, storage temperature and the stability of the protein itself. Generally, the shelf life of liquid form is 6 months at -20°C/-80°C. The shelf life of lyophilized form is 12 months at -20°C/-80°C.
Uniprot No.	P54190
Alias	Toxocara excretory-secretory antigen 26 ;TES-26
Product Type	Recombinant Protein
Immunogen Species	Toxocara canis (Canine roundworm)
Purity	Greater than 90% as determined by SDS-PAGE.
Sequence	QCMDSASDCAANAGSCFTRPVSQVLQNRQCRTCNTCDCRDEANNCAASINL CQNPTFEPLVRDRCQKTCGLCAGCGFISSGIVPLVVTSAPSRRVSVTFANNVQ VNCGNLTTAQVANQPTVTWEAQPNDRYTLIMVDPDFPSAANGQQGQRLHW WVINIPGNNIAGGTTLAAFQPSTPAANTGVHRYVFLVYRQPAAINSPLLNNLVV QDSERPGFGTTAFATQFNLGSPYAGNFYRSQA
Research Area	Others
Source	E.coli
Target Names	TES-26
Expression Region	22-262aa
Notes	Repeated freezing and thawing is not recommended. Store working aliquots at 4°C for up to one week.
Tag Info	N-terminal 6xHis-SUMO-tagged
Mol. Weight	41.9kDa
Protein Length	Full Length of Mature Protein
Image	



(Tris-Glycine gel) Discontinuous SDS-PAGE (reduced) with 5% enrichment gel and 15% separation gel.

Reconstitution

We recommend that this vial be briefly centrifuged prior to opening to bring the contents to the bottom. Please reconstitute protein in deionized sterile water to a concentration of 0.1-1.0 mg/mL. We recommend to add 5-50% of glycerol (final concentration) and aliquot for long-term storage at -20°C/-80°C. Our default final concentration of glycerol is 50%. Customers could use it as reference.

Shelf Life

The shelf life is related to many factors, storage state, buffer ingredients, storage temperature and the stability of the protein itself. Generally, the shelf life of liquid form is 6 months at -20°C/-80°C. The shelf life of lyophilized form is 12 months at -20°C/-80°C.