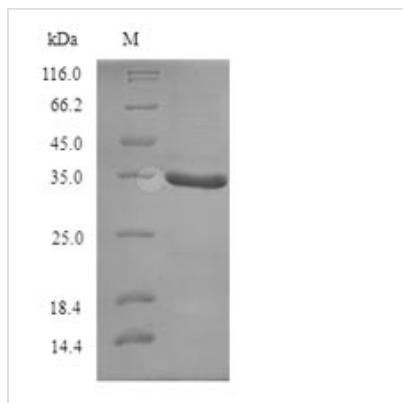




# Recombinant *Geobacillus stearothermophilus* ATP-dependent DNA helicase PcrA (pcrA), partial

|                          |   |
|--------------------------|---|
| <b>Product Code</b>      | CSB-YP349564GFM   |
| <b>Relevance</b>         | DNA helicase. Has a broad nucleotide specificity, even being able to hydrolyze ethenonucleotides, and is able to couple the hydrolysis to unwinding of DNA substrates. It is a 3'-5' helicase but at high protein concentrations it can also displace a substrate with a 5' tail. Preferred substrate being one with both single and double-stranded regions of DNA |
| <b>Abbreviation</b>      | Recombinant <i>Geobacillus stearothermophilus</i> pcrA protein, partial   |
| <b>Storage</b>           | The shelf life is related to many factors, storage state, buffer ingredients, storage temperature and the stability of the protein itself. Generally, the shelf life of liquid form is 6 months at -20°C/-80°C. The shelf life of lyophilized form is 12 months at -20°C/-80°C.   |
| <b>Uniprot No.</b>       | P56255  |
| <b>Product Type</b>      | Recombinant Protein   |
| <b>Immunogen Species</b> | <i>Geobacillus stearothermophilus</i> ( <i>Bacillus stearothermophilus</i> )  |
| <b>Purity</b>            | Greater than 90% as determined by SDS-PAGE.   |
| <b>Sequence</b>          | AHLNKEQQEAVRTTEGPLLIMAGAGSGKTRVLTHRIAYLMAEKHVAPWNILAIT<br>FTNKAAREMRERVQSLGGAEDVWISTFHSMCVRILRRDIDRIGINRNFSSILD<br>PTDQLSVMKTILKEKNIDPKKFEPRTILGTISAANKNELLPPEQFAKRASTYYEKV<br>VSDVYQEYQQRLLRNHSLDFDDLIMTTIQLFDRVPDVLHYYQYKFQYIHIDEYQ<br>DTNRAQYTLVKKLAERFQNICAVGDADQSIYRWRGADIQNILSFERDYPNAKVI<br>LLEQNYRST  |
| <b>Research Area</b>     | Cancer  |
| <b>Source</b>            | Yeast   |
| <b>Target Names</b>      | pcrA  |
| <b>Protein Names</b>     | Recommended name: ATP-dependent DNA helicase pcrA EC= 3.6.4.12  |
| <b>Expression Region</b> | 10-289aa  |
| <b>Notes</b>             | Repeated freezing and thawing is not recommended. Store working aliquots at 4°C for up to one week.   |
| <b>Tag Info</b>          | N-terminal 6xHis-tagged   |
| <b>Mol. Weight</b>       | 34.6kDa   |
| <b>Protein Length</b>    | Partial   |
| <b>Image</b>             |   |



(Tris-Glycine gel) Discontinuous SDS-PAGE (reduced) with 5% enrichment gel and 15% separation gel.

### Reconstitution

We recommend that this vial be briefly centrifuged prior to opening to bring the contents to the bottom. Please reconstitute protein in deionized sterile water to a concentration of 0.1-1.0 mg/mL. We recommend to add 5-50% of glycerol (final concentration) and aliquot for long-term storage at -20°C/-80°C. Our default final concentration of glycerol is 50%. Customers could use it as reference.

### Shelf Life

The shelf life is related to many factors, storage state, buffer ingredients, storage temperature and the stability of the protein itself. Generally, the shelf life of liquid form is 6 months at -20°C/-80°C. The shelf life of lyophilized form is 12 months at -20°C/-80°C.