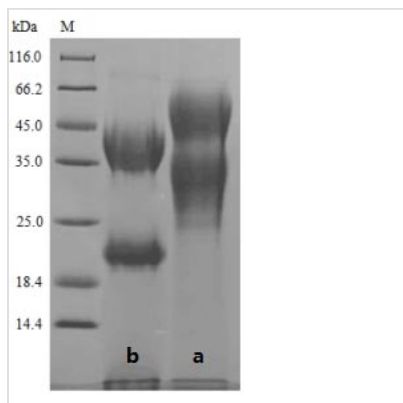


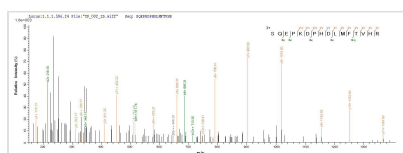


Recombinant Pig Cadherin-3 (CDH3)

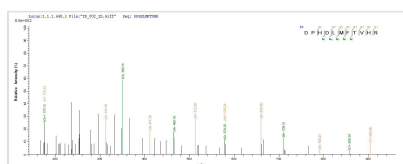
Product Code	CSB-YP005052PI
Relevance	Cadherins are calcium-dependent cell adhesion proteins. They preferentially interact with themselves in a homophilic manner in connecting cells; cadherins may thus contribute to the sorting of heterogeneous cell types.
Abbreviation	Recombinant Pig CDH3 protein
Storage	The shelf life is related to many factors, storage state, buffer ingredients, storage temperature and the stability of the protein itself. Generally, the shelf life of liquid form is 6 months at -20°C/-80°C. The shelf life of lyophilized form is 12 months at -20°C/-80°C.
Uniprot No.	O18926
Alias	Placental cadherin
Product Type	Recombinant Protein
Immunogen Species	Sus scrofa (Pig)
Purity	≥ 85% as determined by SDS-PAGE.
Sequence	KIAKYELFGHAVSENGASVEEPMNISIIVTDQNDHKPKFTQDVFRGSVLEGVLP GTSVMQVTATDEDDAINTYNGVVAYSILSQEPKDPHDLMTVHRSTGAISVISS GLDRERVPEYTLTIQATDMGDGGSSTTATAIVEILDA
Research Area	Signal Transduction
Source	Yeast
Target Names	CDH3
Protein Names	Recommended name: Cadherin-3 Alternative name(s): Placental cadherin Short name= P-cadherin
Expression Region	1-145aa
Notes	Repeated freezing and thawing is not recommended. Store working aliquots at 4°C for up to one week.
Tag Info	N-terminal 6xHis-tagged
Mol. Weight	17.6kDa
Protein Length	Full Length
Image	



(Tris-Glycine gel) Discontinuous SDS-PAGE (reduced) with 5% enrichment gel and 15% separation gel.



Based on the SEQUEST from database of Yeast host and target protein, the LC-MS/MS Analysis result of CSB-YP005052PI could indicate that this peptide derived from Yeast-expressed *Sus scrofa* (Pig) CDH3.



Based on the SEQUEST from database of Yeast host and target protein, the LC-MS/MS Analysis result of CSB-YP005052PI could indicate that this peptide derived from Yeast-expressed *Sus scrofa* (Pig) CDH3.

Reconstitution

We recommend that this vial be briefly centrifuged prior to opening to bring the contents to the bottom. Please reconstitute protein in deionized sterile water to a concentration of 0.1-1.0 mg/mL. We recommend to add 5-50% of glycerol (final concentration) and aliquot for long-term storage at -20°C/-80°C. Our default final concentration of glycerol is 50%. Customers could use it as reference.

Shelf Life

The shelf life is related to many factors, storage state, buffer ingredients, storage temperature and the stability of the protein itself. Generally, the shelf life of liquid form is 6 months at -20°C/-80°C. The shelf life of lyophilized form is 12 months at -20°C/-80°C.