

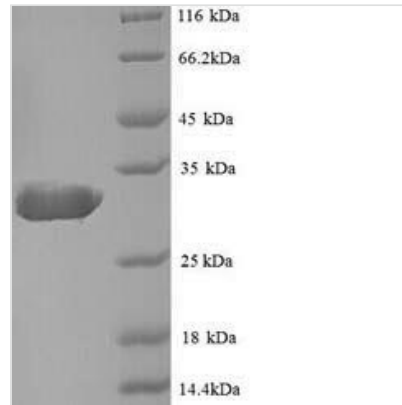


# Recombinant Escherichia coli Beta-lactamase TEM (bla)

<b>Product Code</b>	CSB-YP352353ENL
<b>Relevance</b>	T-type are the most prevalent beta-lactamases in enterobacteria; they hydrolyze the beta-lactam bond in susceptible beta-lactam antibiotics, thus conferring resistance to penicillins and cephalosporins. T-3 and T-4 are capable of hydrolyzing cefotaxime and ceftazidime. T-5 is capable of hydrolyzing ceftazidime. T-6 is capable of hydrolyzing ceftazidime and aztreonam. T-8/CAZ-2, T-16/CAZ-7 and T-24/CAZ-6 are markedly active against ceftazidime. IRT-4 shows resistance to beta-lactamase inhibitors.
<b>Abbreviation</b>	Recombinant E.coli bla protein
<b>Storage</b>	The shelf life is related to many factors, storage state, buffer ingredients, storage temperature and the stability of the protein itself. Generally, the shelf life of liquid form is 6 months at -20°C/-80°C. The shelf life of lyophilized form is 12 months at -20°C/-80°C.
<b>Uniprot No.</b>	P62593
<b>Alias</b>	IRT-4PenicillinaseTEM-1TEM-16/CAZ-7TEM-2TEM-24/CAZ-6TEM-3TEM-4TEM-5TEM-6TEM-8/CAZ-2
<b>Product Type</b>	Recombinant Protein
<b>Immunogen Species</b>	Escherichia coli
<b>Purity</b>	Greater than 90% as determined by SDS-PAGE.
<b>Sequence</b>	HPETLVKVKDAEDQLGARVGYIELDLNSGKILESFRPEERFPMMSTFKVLLCGA VLSRVDAGQEQLGRRIHYSQNDLVEYSPVTEKHLTDGMTVRELCSAAITMSDN TAANLLLTIGGPKELTAFLHNMGDHVTRLDRWEPELNEAIPNDERDITMPAA MATTLRKLLTGELLTLASRQQLIDWMEADKVAGPLLRSAIPAGWFIADKSGAG ERGSRGIIAALGPDGKPSRIVVIYTTGSQATMDERNRQIAEIGASLIKHW
<b>Research Area</b>	Others
<b>Source</b>	Yeast
<b>Target Names</b>	bla;
<b>Protein Names</b>	IRT-4PenicillinaseTEM-1TEM-16/CAZ-7TEM-2TEM-24/CAZ-6TEM-3TEM-4TEM-5TEM-6TEM-8/CAZ-2
<b>Expression Region</b>	24-286aa
<b>Notes</b>	Repeated freezing and thawing is not recommended. Store working aliquots at 4°C for up to one week.
<b>Tag Info</b>	N-terminal 6xHis-tagged
<b>Mol. Weight</b>	30.9 kDa
<b>Protein Length</b>	Full Length of Mature Protein



## Image



(Tris-Glycine gel) Discontinuous SDS-PAGE (reduced) with 5% enrichment gel and 15% separation gel.

## Reconstitution

We recommend that this vial be briefly centrifuged prior to opening to bring the contents to the bottom. Please reconstitute protein in deionized sterile water to a concentration of 0.1-1.0 mg/mL. We recommend to add 5-50% of glycerol (final concentration) and aliquot for long-term storage at -20°C/-80°C. Our default final concentration of glycerol is 50%. Customers could use it as reference.

## Shelf Life

The shelf life is related to many factors, storage state, buffer ingredients, storage temperature and the stability of the protein itself.

Generally, the shelf life of liquid form is 6 months at -20°C/-80°C. The shelf life of lyophilized form is 12 months at -20°C/-80°C.