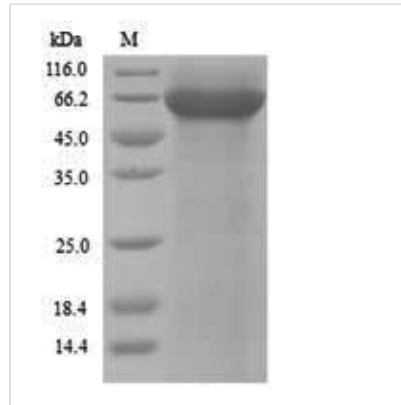


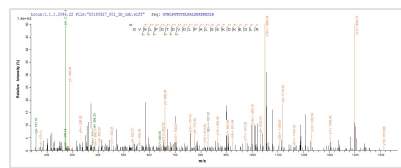


# Recombinant *Saccharomyces cerevisiae* Pyruvate kinase 1 (CDC19)

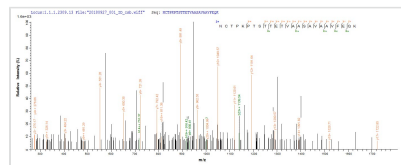
<b>Product Code</b>	CSB-YP355535SVG
<b>Relevance</b>	The activity is regulated by glucose levels. Activated by fructose-1,6-bisphosphate.
<b>Abbreviation</b>	Recombinant <i>Saccharomyces cerevisiae</i> CDC19 protein
<b>Storage</b>	The shelf life is related to many factors, storage state, buffer ingredients, storage temperature and the stability of the protein itself. Generally, the shelf life of liquid form is 6 months at -20°C/-80°C. The shelf life of lyophilized form is 12 months at -20°C/-80°C.
<b>Uniprot No.</b>	P00549
<b>Alias</b>	cell division cycle protein 19
<b>Product Type</b>	Recombinant Protein
<b>Immunogen Species</b>	<i>Saccharomyces cerevisiae</i> (strain ATCC 204508 / S288c) (Baker's yeast)
<b>Purity</b>	≥ 90% as determined by SDS-PAGE.
<b>Sequence</b>	SRLERLTSLNVVAGSDLRRTSIIGTIGPKTNNPETLVALRKAGLNIVRMNFSGS YEYHKSVIDNARKSEELYPGRPLAIALDTKGPEIRTTGTTTNDVDYPIPPNHEMIF TTDDKYAKACDDKIMYVDYKNITKVISAGRIIYVDDGVLSFQVLEVVDDKTLKVK ALNAGKICSHKGVNLPDGLPALSEKDKEDLRFVKNVHMFASFIRTAN DVLTIREVLEGGKDVKIIVKIENQQGVNDFEILKVTGVMVARGDLGIEIPAP EVLAVQKKLIAKSNLAGKPVICATQMLESMTYNPRPTRAEVSDVGNAILDGADC VMLSGETAKGNYPINAVTTMAETAVIAEQAIAYLPNYDDMRNCTPKPTSTTETV AASAVAAVFEQKAKAIIVLSTSGTTPRLVSKYRPNCPILVTRCPRAARFSLYR GVFPFVFEKEPVSDWTDDVEARINFGIEKAKEFGILKKGDTYVSIQGFKAGAGH SNTLQVSTV
<b>Research Area</b>	Epigenetics and Nuclear Signaling
<b>Source</b>	Yeast
<b>Target Names</b>	CDC19
<b>Protein Names</b>	Recommended name: Pyruvate kinase 1 Short name= PK 1 EC= 2.7.1.40 Alternative name(s): cell division cycle protein 19
<b>Expression Region</b>	2-500aa
<b>Notes</b>	Repeated freezing and thawing is not recommended. Store working aliquots at 4°C for up to one week.
<b>Tag Info</b>	N-terminal 6xHis-tagged
<b>Mol. Weight</b>	56.4kDa
<b>Protein Length</b>	Full Length of Mature Protein
<b>Image</b>	



(Tris-Glycine gel) Discontinuous SDS-PAGE (reduced) with 5% enrichment gel and 15% separation gel.



Based on the SEQUEST from database of Yeast host and target protein, the LC-MS/MS Analysis result of CSB-YP355535SVG could indicate that this peptide derived from Yeast-expressed *Saccharomyces cerevisiae* (strain ATCC 204508 / S288c) (Baker's yeast) CDC19.



Based on the SEQUEST from database of Yeast host and target protein, the LC-MS/MS Analysis result of CSB-YP355535SVG could indicate that this peptide derived from Yeast-expressed *Saccharomyces cerevisiae* (strain ATCC 204508 / S288c) (Baker's yeast) CDC19.

## Reconstitution

We recommend that this vial be briefly centrifuged prior to opening to bring the contents to the bottom. Please reconstitute protein in deionized sterile water to a concentration of 0.1-1.0 mg/mL. We recommend to add 5-50% of glycerol (final concentration) and aliquot for long-term storage at -20°C/-80°C. Our default final concentration of glycerol is 50%. Customers could use it as reference.

## Shelf Life

The shelf life is related to many factors, storage state, buffer ingredients, storage temperature and the stability of the protein itself.

Generally, the shelf life of liquid form is 6 months at -20°C/-80°C. The shelf life of lyophilized form is 12 months at -20°C/-80°C.