



# Recombinant Escherichia coli Methyl-accepting chemotaxis protein I (tsr), partial

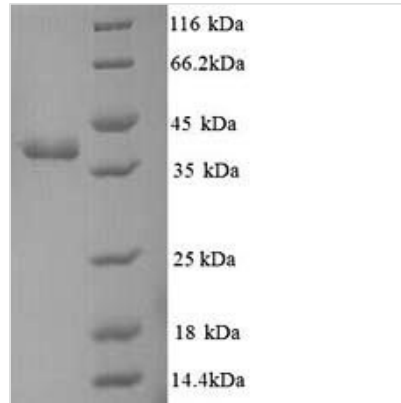
<b>Product Code</b>	CSB-YP355908ENV
<b>Relevance</b>	Receptor for the attractant L-serine and related amino acids. Is also responsible for chotaxis away from a wide range of repellents, including leucine, indole, and weak acids.Chotactic-signal transducers respond to changes in the concentration of attractants and repellents in the environment, transduce a signal from the outside to the inside of the cell, and facilitate sensory adaptation through the variation of the level of methylation. Attractants increase the level of methylation while repellents decrease the level of methylation, the methyl groups are added by the methyltransferase CheR and roved by the methylesterase CheB.
<b>Abbreviation</b>	Recombinant E.coli tsr protein, partial
<b>Storage</b>	The shelf life is related to many factors, storage state, buffer ingredients, storage temperature and the stability of the protein itself. Generally, the shelf life of liquid form is 6 months at -20°C/-80°C. The shelf life of lyophilized form is 12 months at -20°C/-80°C.
<b>Uniprot No.</b>	P02942
<b>Alias</b>	Serine chemoreceptor protein
<b>Product Type</b>	Recombinant Protein
<b>Immunogen Species</b>	Escherichia coli (strain K12)
<b>Purity</b>	Greater than 90% as determined by SDS-PAGE.
<b>Sequence</b>	WFGIKASLVAPMNRLIDSIRHIAGGDLVKPIEVDGGSNEMGQLAESLRHMQGEL MRTVGDVRNGANAIYSGASEIATGNNDLSSRTEQQAASLEETAASMEQLTATV KQNAENARQASHLALSASETAQRGGKVVDNVVQTMRDISTSSQKIADIISVIDG IAFQTNILALNAAVEAARAGEQGRGFAVVAGEVRNLAQRSQAQAREIKSLIEDS VGKVDVGSTLVESAGETMAEIVSAVTRVTDIMGEIASASDEQSRGIDQVGLAVA EMDRVTTQQNAALVEESAAAAAALEEQASRLTEAVAVFRIQQQQRETSAVVKT VTPAAPRKMAVADSEENWETF
<b>Research Area</b>	Others
<b>Source</b>	Yeast
<b>Target Names</b>	tsr
<b>Protein Names</b>	Recommended name: Methyl-accepting chemotaxis protein I Short name=MCP-IA Alternative name(s): Serine chemoreceptor protein
<b>Expression Region</b>	211-551aa
<b>Notes</b>	Repeated freezing and thawing is not recommended. Store working aliquots at 4°C for up to one week.
<b>Tag Info</b>	N-terminal 6xHis-tagged



**Mol. Weight** 38.0kDa

**Protein Length** Cytoplasmic Domain

**Image**



(Tris-Glycine gel) Discontinuous SDS-PAGE (reduced) with 5% enrichment gel and 15% separation gel.

**Reconstitution**

We recommend that this vial be briefly centrifuged prior to opening to bring the contents to the bottom. Please reconstitute protein in deionized sterile water to a concentration of 0.1-1.0 mg/mL. We recommend to add 5-50% of glycerol (final concentration) and aliquot for long-term storage at -20°C/-80°C. Our default final concentration of glycerol is 50%. Customers could use it as reference.

**Shelf Life**

The shelf life is related to many factors, storage state, buffer ingredients, storage temperature and the stability of the protein itself. Generally, the shelf life of liquid form is 6 months at -20°C/-80°C. The shelf life of lyophilized form is 12 months at -20°C/-80°C.