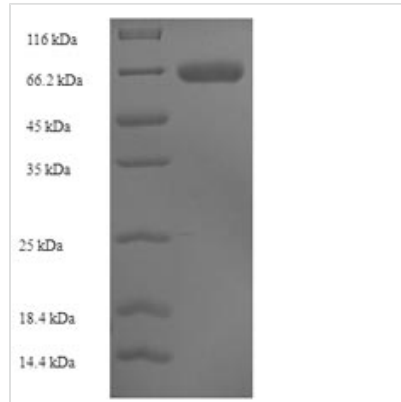




Recombinant *Saccharomyces cerevisiae* Alpha-galactosidase 1 (MEL1)

Product Code	CSB-EP356371SAC
Abbreviation	Recombinant <i>Saccharomyces cerevisiae</i> MEL1 protein
Storage	The shelf life is related to many factors, storage state, buffer ingredients, storage temperature and the stability of the protein itself. Generally, the shelf life of liquid form is 6 months at -20°C/-80°C. The shelf life of lyophilized form is 12 months at -20°C/-80°C.
Uniprot No.	P04824
Alias	Alpha-D-galactoside galactohydrolase 1Melibiase 1
Product Type	Recombinant Protein
Immunogen Species	<i>Saccharomyces cerevisiae</i> (Baker's yeast)
Purity	≥ 90% as determined by SDS-PAGE.
Sequence	VSPSYNGLGLTPQMWDNWNNTFACDVSEQLLLDTADRISDLGLKDMGYKYIIL DDCWSSGRDSDGFLVADEQKFPNGMGHVADHLHNNSFLFGMYSSAGEYTC AGYPGSLGREEEDAQFFANNRVDYLYKDYNCYNKGQFGTPEISYHRYKAMSDA LNKTGRPIFYSLCNWGGDLTFYWGSGIANSWRMSGDVTAEFTRPDSRCPD GDEYDCKYAGFHCSIMNILNKAAPMGQNAGVGGWNDLDNLEVGVGNLTDDE EKAHFSMWAMVKSPLIIGANVNNLKASSYSIYSQASVIAINQDSNGIPATRVWR YYVSDTDEYGQGEIQMWSGPLDNGDQVVALNNGGSVSRPMNTTLEEIFFDSN LGSKKLTSTWDIYDLWANRVDNSTASAILGRNKTATGILYNATEQSYKDGLSKN DTRLFGQKIGSLSPNAILNTTTPAHGIAFYRLRPSS
Research Area	Others
Source	E.coli
Target Names	MEL1
Expression Region	19-471aa
Notes	Repeated freezing and thawing is not recommended. Store working aliquots at 4°C for up to one week.
Tag Info	N-terminal 6xHis-SUMO-tagged
Mol. Weight	66.1kDa
Protein Length	Full Length of Mature Protein
Image	



(Tris-Glycine gel) Discontinuous SDS-PAGE (reduced) with 5% enrichment gel and 15% separation gel.

Reconstitution

We recommend that this vial be briefly centrifuged prior to opening to bring the contents to the bottom. Please reconstitute protein in deionized sterile water to a concentration of 0.1-1.0 mg/mL. We recommend to add 5-50% of glycerol (final concentration) and aliquot for long-term storage at -20°C/-80°C. Our default final concentration of glycerol is 50%. Customers could use it as reference.

Shelf Life

The shelf life is related to many factors, storage state, buffer ingredients, storage temperature and the stability of the protein itself. Generally, the shelf life of liquid form is 6 months at -20°C/-80°C. The shelf life of lyophilized form is 12 months at -20°C/-80°C.