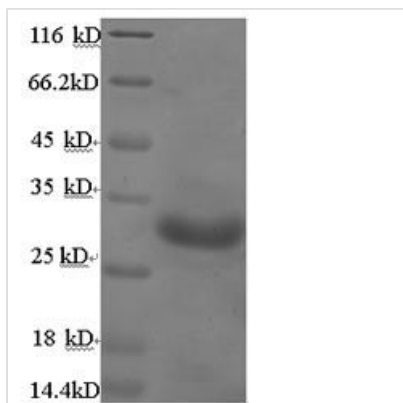


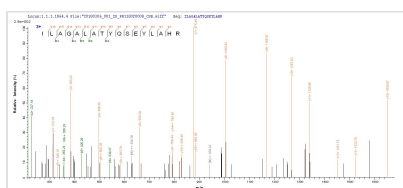


Recombinant Bordetella pertussis Pertussis toxin subunit 1 (ptxA)

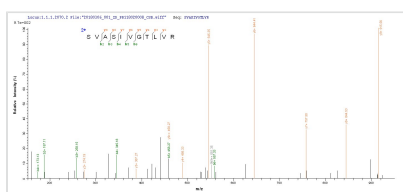
Product Code	CSB-EP356423BUA
Relevance	S1 is an NAD-dependent ADP-ribosyltransferase, which plays a crucial role in the pathogenesis of B.pertussis causing disruption of normal host cellular regulation. It catalyzes the ADP-ribosylation of a cysteine in the alpha subunit of host heterotrimeric G proteins. In the absence of G proteins it also catalyzes the cleavage of NAD+ into ADP-ribose and nicotinamide. It irreversibly uncouples the G-alpha GTP-binding proteins from their mbrane receptors.
Abbreviation	Recombinant Bordetella pertussis ptxA protein
Storage	The shelf life is related to many factors, storage state, buffer ingredients, storage temperature and the stability of the protein itself. Generally, the shelf life of liquid form is 6 months at -20°C/-80°C. The shelf life of lyophilized form is 12 months at -20°C/-80°C.
Uniprot No.	P04977
Alias	Islet-activating protein S1 ;IAP S1NAD-dependent ADP-ribosyltransferase (EC:2.4.2.-)
Product Type	Recombinant Protein
Immunogen Species	Bordetella pertussis (strain Tohama I / ATCC BAA-589 / NCTC 13251)
Purity	Greater than 90% as determined by SDS-PAGE.
Sequence	DDPPATVYRYDSRPPEDVFQNGFTAWGNNDNVLHDLTGRSCQVGSSNSAFV STSSRRRYTEVYLEHRMQEAVEAERAGRGTGHFIGYIYEV RADNNFYGAASS YFEYVDTYGDNAGRILAGALATYQSEYLAHRRIPPENIRRVTRVYHNGITGETT TTEYSNARYVVSQQTRANPNPYTSRRSVASIVGTLVRMAPVIGACMARQAESS EAMAAWSERAGEAMVLVYYESIAYSF
Research Area	Others
Source	E.coli
Target Names	ptxA
Expression Region	35-269aa
Notes	Repeated freezing and thawing is not recommended. Store working aliquots at 4°C for up to one week.
Tag Info	N-terminal 6xHis-tagged
Mol. Weight	30.2kDa
Protein Length	Full Length of Mature Protein
Image	



(Tris-Glycine gel) Discontinuous SDS-PAGE (reduced) with 5% enrichment gel and 15% separation gel.



Based on the SEQUEST from database of E.coli host and target protein, the LC-MS/MS Analysis result of CSB-EP356423BUA could indicate that this peptide derived from E.coli-expressed Bordetella pertussis (strain Tohama I / ATCC BAA-589 / NCTC 13251) ptxA.



Based on the SEQUEST from database of E.coli host and target protein, the LC-MS/MS Analysis result of CSB-EP356423BUA could indicate that this peptide derived from E.coli-expressed Bordetella pertussis (strain Tohama I / ATCC BAA-589 / NCTC 13251) ptxA.

Reconstitution

We recommend that this vial be briefly centrifuged prior to opening to bring the contents to the bottom. Please reconstitute protein in deionized sterile water to a concentration of 0.1-1.0 mg/mL. We recommend to add 5-50% of glycerol (final concentration) and aliquot for long-term storage at -20°C/-80°C. Our default final concentration of glycerol is 50%. Customers could use it as reference.

Shelf Life

The shelf life is related to many factors, storage state, buffer ingredients, storage temperature and the stability of the protein itself. Generally, the shelf life of liquid form is 6 months at -20°C/-80°C. The shelf life of lyophilized form is 12 months at -20°C/-80°C.