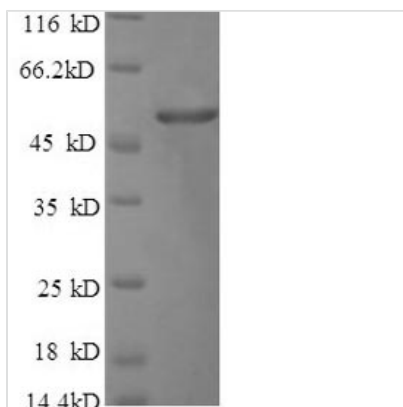




Recombinant *Bacillus thuringiensis* subsp. *kurstaki* Pesticidal crystal protein cry1Ac (cry1Ac), partial

Product Code	CSB-EP356448BDC
Relevance	Promotes colloid osmotic lysis by binding to the midgut epithelial cells of many lepidopteran larvae.
Abbreviation	Recombinant <i>Bacillus thuringiensis</i> subsp. <i>kurstaki</i> cry1Ac protein, partial
Storage	The shelf life is related to many factors, storage state, buffer ingredients, storage temperature and the stability of the protein itself. Generally, the shelf life of liquid form is 6 months at -20°C/-80°C. The shelf life of lyophilized form is 12 months at -20°C/-80°C.
Uniprot No.	P05068
Alias	133 kDa crystal protein; Crystalline entomocidal protoxin Insecticidal delta-endotoxin CryIA(c)
Product Type	Recombinant Protein
Immunogen Species	<i>Bacillus thuringiensis</i> subsp. <i>kurstaki</i>
Purity	Greater than 90% as determined by SDS-PAGE.
Sequence	LYDARNVIKNGDFNNGLSWNVKGHVDVEEQNNQRSVLVPEWEAEVSQEV RVC PGRGYILRV TAYKEGYGEGCVTIHEIENNTDELKFSNCVEEEIYPNNTVTC NDYTVNQEEYGGAYTSRNRGYNEAPSPADYASVYEEKSYTDGRRENPCF NRGYRDTPLPVGYVTKELEYFPETDKVWIEIGETEGTFIVDSVELLLMEE
Research Area	Others
Source	<i>E. coli</i>
Target Names	cry1Ac
Expression Region	972-1178aa
Notes	Repeated freezing and thawing is not recommended. Store working aliquots at 4°C for up to one week.
Tag Info	N-terminal GST-tagged
Mol. Weight	50.8kDa
Protein Length	Partial
Image	



(Tris-Glycine gel) Discontinuous SDS-PAGE (reduced) with 5% enrichment gel and 15% separation gel.

Reconstitution

We recommend that this vial be briefly centrifuged prior to opening to bring the contents to the bottom. Please reconstitute protein in deionized sterile water to a concentration of 0.1-1.0 mg/mL. We recommend to add 5-50% of glycerol (final concentration) and aliquot for long-term storage at -20°C/-80°C. Our default final concentration of glycerol is 50%. Customers could use it as reference.

Shelf Life

The shelf life is related to many factors, storage state, buffer ingredients, storage temperature and the stability of the protein itself. Generally, the shelf life of liquid form is 6 months at -20°C/-80°C. The shelf life of lyophilized form is 12 months at -20°C/-80°C.