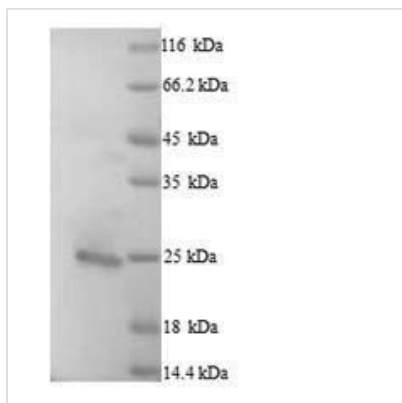




# Recombinant Human Bcl-2-like protein 11 (BCL2L11)

<b>Product Code</b>	CSB-YP002615HU
<b>Relevance</b>	Induces apoptosis and anoikis. Isoform BimL is more potent than isoform BimEL. Isoform Bim-alpha1, isoform Bim-alpha2 and isoform Bim-alpha3 induce apoptosis, although less potent than isoform BimEL, isoform BimL and isoform BimS. Isoform Bim-gamma induces apoptosis. Isoform Bim-alpha3 induces apoptosis possibly through a caspase-mediated pathway. Isoform BimAC and isoform BimABC lack the ability to induce apoptosis.
<b>Abbreviation</b>	Recombinant Human BCL2L11 protein
<b>Storage</b>	The shelf life is related to many factors, storage state, buffer ingredients, storage temperature and the stability of the protein itself. Generally, the shelf life of liquid form is 6 months at -20°C/-80°C. The shelf life of lyophilized form is 12 months at -20°C/-80°C.
<b>Uniprot No.</b>	O43521
<b>Alias</b>	Bcl2-interacting mediator of cell death
<b>Product Type</b>	Recombinant Protein
<b>Immunogen Species</b>	Homo sapiens (Human)
<b>Purity</b>	Greater than 90% as determined by SDS-PAGE.
<b>Sequence</b>	MAKQPSDVSSECDREGRQLQPAERPPQLRPGAPTSLQTEPQGNPEGNHGG EGDSCPHGSPQGPLAPPASPGPFATRSPFLFIMRRSSLLSRSSSGYFSFDTR SPAPMSCDKSTQTPSPPCQAFNHYLSAMASMRQAEPADMRPEIWIQAQLRRI GDEFNAYYARRVFLNNYQAAEDHPRMVILRLLRYIVRLVWRMH
<b>Research Area</b>	Cancer
<b>Source</b>	Yeast
<b>Target Names</b>	BCL2L11
<b>Protein Names</b>	Recommended name: Bcl-2-like protein 11 Short name= Bcl2-L-11 Alternative name(s): Bcl2-interacting mediator of cell death
<b>Expression Region</b>	1-198aa
<b>Notes</b>	Repeated freezing and thawing is not recommended. Store working aliquots at 4°C for up to one week.
<b>Tag Info</b>	N-terminal 6xHis-tagged
<b>Mol. Weight</b>	24.2kDa
<b>Protein Length</b>	Full Length
<b>Image</b>	



(Tris-Glycine gel) Discontinuous SDS-PAGE (reduced) with 5% enrichment gel and 15% separation gel.

### Reconstitution

We recommend that this vial be briefly centrifuged prior to opening to bring the contents to the bottom. Please reconstitute protein in deionized sterile water to a concentration of 0.1-1.0 mg/mL. We recommend to add 5-50% of glycerol (final concentration) and aliquot for long-term storage at -20°C/-80°C. Our default final concentration of glycerol is 50%. Customers could use it as reference.

### Shelf Life

The shelf life is related to many factors, storage state, buffer ingredients, storage temperature and the stability of the protein itself. Generally, the shelf life of liquid form is 6 months at -20°C/-80°C. The shelf life of lyophilized form is 12 months at -20°C/-80°C.