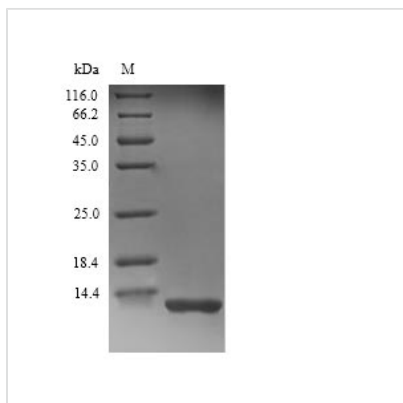




Recombinant Rat Complement C3 (C3), partial

Product Code	CSB-YP360475RA
Relevance	C3 plays a central role in the activation of the complement system. Its processing by C3 convertase is the central reaction in both classical and alternative complement pathways. After activation C3b can bind covalently, via its reactive thioester, to cell surface carbohydrates or immune aggregates.
Abbreviation	Recombinant Rat C3 protein, partial
Storage	The shelf life is related to many factors, storage state, buffer ingredients, storage temperature and the stability of the protein itself. Generally, the shelf life of liquid form is 6 months at -20°C/-80°C. The shelf life of lyophilized form is 12 months at -20°C/-80°C.
Uniprot No.	P01026
Alias	Neutrophil chemotactic factor-2
Product Type	Recombinant Protein
Immunogen Species	Rattus norvegicus (Rat)
Purity	≥ 90% as determined by SDS-PAGE.
Sequence	SVQLMERRMDKAGQYTDKGLRKCCEDGMRDIPMPYSCQRRARLITQGESCL KAFMDCCNYITKLREQHRRDHVGLGL
Research Area	Immunology
Source	Yeast
Target Names	C3
Protein Names	Recommended name: Complement C3 Cleaved into the following 11 chains: 1. Complement C3 beta chain 2. Complement C3 alpha chain Alternative name(s): ENCF-1 Neutrophil chemotactic factor-1 Neutrophil chemotactic factor-2 Alternative
Expression Region	671-746aa
Notes	Repeated freezing and thawing is not recommended. Store working aliquots at 4°C for up to one week.
Tag Info	N-terminal 6xHis-tagged
Mol. Weight	11.0kDa
Protein Length	Partial
Image	



(Tris-Glycine gel) Discontinuous SDS-PAGE (reduced) with 5% enrichment gel and 15% separation gel.

Reconstitution

We recommend that this vial be briefly centrifuged prior to opening to bring the contents to the bottom. Please reconstitute protein in deionized sterile water to a concentration of 0.1-1.0 mg/mL. We recommend to add 5-50% of glycerol (final concentration) and aliquot for long-term storage at -20°C/-80°C. Our default final concentration of glycerol is 50%. Customers could use it as reference.

Shelf Life

The shelf life is related to many factors, storage state, buffer ingredients, storage temperature and the stability of the protein itself. Generally, the shelf life of liquid form is 6 months at -20°C/-80°C. The shelf life of lyophilized form is 12 months at -20°C/-80°C.