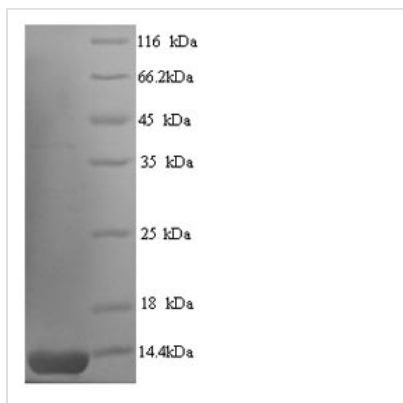




# Recombinant Human herpesvirus 1 ICP47 protein (US12)

<b>Product Code</b>	CSB-YP360979HWY
<b>Relevance</b>	Plays a role in the inhibition of host immune response. Binds specifically to transporters associated with antigen processing (TAP), thereby blocking peptide-binding and translocation by TAP as well as subsequent loading of peptides onto MHC class I molecules. pty MHC I molecules are retained in the endoplasmic reticulum and ultimately directed to proteasomal degradation. In consequence, infected cells are masked for immune recognition by cytotoxic T-lymphocytes.
<b>Abbreviation</b>	Recombinant Human herpesvirus 1 US12 protein
<b>Storage</b>	The shelf life is related to many factors, storage state, buffer ingredients, storage temperature and the stability of the protein itself. Generally, the shelf life of liquid form is 6 months at -20°C/-80°C. The shelf life of lyophilized form is 12 months at -20°C/-80°C.
<b>Uniprot No.</b>	P03170
<b>Alias</b>	Immediate-early protein IE12Immediate-early-5Infected cell protein 47US12 proteinVmw12
<b>Product Type</b>	Recombinant Protein
<b>Immunogen Species</b>	Human herpesvirus 1 (strain 17) (HHV-1) (Human herpes simplex virus 1)
<b>Purity</b>	Greater than 90% as determined by SDS-PAGE.
<b>Sequence</b>	MSWALEMADTFLDTMRVGPRTYADVRDEINKRGREDREAARTAVHDPERPLL RSPGLLPEIAPNASLGVVHRRTGGTVTDSRNPVTR
<b>Research Area</b>	Others
<b>Source</b>	Yeast
<b>Target Names</b>	US12
<b>Protein Names</b>	Recommended name: ICP47 protein Alternative name(s): Immediate-early protein IE12 Immediate-early-5 Infected cell protein 47 US12 protein Vmw12
<b>Expression Region</b>	1-88aa
<b>Notes</b>	Repeated freezing and thawing is not recommended. Store working aliquots at 4°C for up to one week.
<b>Tag Info</b>	N-terminal 6xHis-tagged
<b>Mol. Weight</b>	11.8kDa
<b>Protein Length</b>	Full Length
<b>Image</b>	



(Tris-Glycine gel) Discontinuous SDS-PAGE (reduced) with 5% enrichment gel and 15% separation gel.

### Reconstitution

We recommend that this vial be briefly centrifuged prior to opening to bring the contents to the bottom. Please reconstitute protein in deionized sterile water to a concentration of 0.1-1.0 mg/mL. We recommend to add 5-50% of glycerol (final concentration) and aliquot for long-term storage at -20°C/-80°C. Our default final concentration of glycerol is 50%. Customers could use it as reference.

### Shelf Life

The shelf life is related to many factors, storage state, buffer ingredients, storage temperature and the stability of the protein itself. Generally, the shelf life of liquid form is 6 months at -20°C/-80°C. The shelf life of lyophilized form is 12 months at -20°C/-80°C.