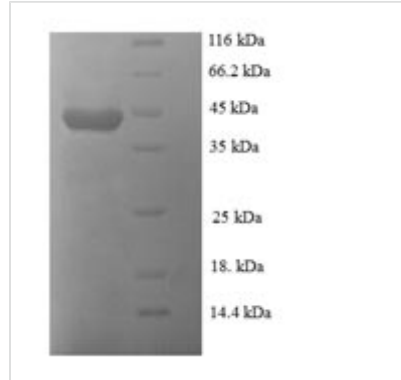




# Recombinant Human papillomavirus type 18 Regulatory protein E2 (E2)

<b>Product Code</b>	CSB-EP361949HMN
<b>Relevance</b>	E2 regulates viral transcription and DNA replication. It binds to the E2RE response element (5'-ACCNNNNNNGGT-3') present in multiple copies in the regulatory region. It can either activate or repress transcription depending on E2RE's position with regards to proximal promoter elements. Repression occurs by sterically hindering the assembly of the transcription initiation complex. The E1-E2 complex binds to the origin of DNA replication.
<b>Abbreviation</b>	Recombinant Human papillomavirus type 18 E2 protein
<b>Storage</b>	The shelf life is related to many factors, storage state, buffer ingredients, storage temperature and the stability of the protein itself. Generally, the shelf life of liquid form is 6 months at -20°C/-80°C. The shelf life of lyophilized form is 12 months at -20°C/-80°C.
<b>Uniprot No.</b>	P06790
<b>Product Type</b>	Recombinant Protein
<b>Immunogen Species</b>	Human papillomavirus type 18
<b>Purity</b>	Greater than 90% as determined by SDS-PAGE.
<b>Sequence</b>	<pre>MQTPKETLSERLSCVQDKIIDHYENDSKDIDSQIQYWQLIRWENAIFFAAREHGI QTLNHQVVPAYNISKSKAHKAIELQMALQGLAQSAYKTEDWTLQDTCEELWNT EPTHCFKKGQTVQVYFDGNKDNMCTYVAWDSVYYMTDAGTWDKTATCVS HRGLYYVKEGYNTFYIEFKSECEKYGNTGTWEVHFGNNVIDCNDSMCSTSD TVSATQLVKQLQHTPSPYSSTVSVGTAQTYGQTSAAATRPGHCGLAEKQHCGP VNPLLGAATPTGNNKRRKLCGNTTPIIHLKGDNRSLKCLRYRLRKHSDHYRDI SSTWHWTGAGNEKTGILTVTYHSETQRTKFLNTVAIPDSVQILVGYMTM</pre>
<b>Research Area</b>	Epigenetics and Nuclear Signaling
<b>Source</b>	E.coli
<b>Target Names</b>	E2
<b>Expression Region</b>	1-365aa
<b>Notes</b>	Repeated freezing and thawing is not recommended. Store working aliquots at 4°C for up to one week.
<b>Tag Info</b>	N-terminal 6xHis-tagged
<b>Mol. Weight</b>	45.3 kDa
<b>Protein Length</b>	Full Length
<b>Image</b>	



(Tris-Glycine gel) Discontinuous SDS-PAGE (reduced) with 5% enrichment gel and 15% separation gel.

### Reconstitution

We recommend that this vial be briefly centrifuged prior to opening to bring the contents to the bottom. Please reconstitute protein in deionized sterile water to a concentration of 0.1-1.0 mg/mL. We recommend to add 5-50% of glycerol (final concentration) and aliquot for long-term storage at -20°C/-80°C. Our default final concentration of glycerol is 50%. Customers could use it as reference.

### Shelf Life

The shelf life is related to many factors, storage state, buffer ingredients, storage temperature and the stability of the protein itself.

Generally, the shelf life of liquid form is 6 months at -20°C/-80°C. The shelf life of lyophilized form is 12 months at -20°C/-80°C.