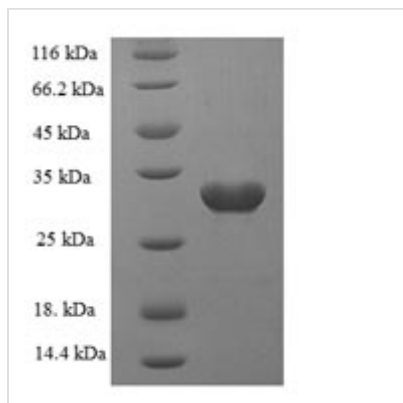




# Recombinant Rat Sortilin (Sort1), partial

<b>Product Code</b>	CSB-EP022412RA
<b>Relevance</b>	Functions as a sorting receptor in the Golgi compartment and as a clearance receptor on the cell surface. Required for protein transport from the Golgi apparatus to the lysosomes by a pathway that is independent of the mannose-6-phosphate receptor (M6PR). Also required for protein transport from the Golgi apparatus to the endosomes. Promotes neuronal apoptosis by mediating endocytosis of the proapoptotic precursor forms of BDNF (proBDNF) and NGFB (proNGFB). Also acts as a receptor for neurotensin. May promote mineralization of the Extracellular domain matrix during osteogenic differentiation by scavenging Extracellular domain LPL. Probably required in adipocytes for the formation of specialized storage vesicles containing the glucose transporter SLC2A4/GLUT4 (GLUT4 storage vesicles, or GSVs). These vesicles provide a stable pool of SLC2A4 and confer increased responsiveness to insulin. May also mediate transport from the endoplasmic reticulum to the Golgi.
<b>Abbreviation</b>	Recombinant Rat Sort1 protein, partial
<b>Storage</b>	The shelf life is related to many factors, storage state, buffer ingredients, storage temperature and the stability of the protein itself. Generally, the shelf life of liquid form is 6 months at -20°C/-80°C. The shelf life of lyophilized form is 12 months at -20°C/-80°C.
<b>Uniprot No.</b>	O54861
<b>Alias</b>	Glycoprotein 110 ;Gp110Neurotensin receptor 3 ;NTR3
<b>Product Type</b>	Recombinant Protein
<b>Immunogen Species</b>	Rattus norvegicus (Rat)
<b>Purity</b>	Greater than 90% as determined by SDS-PAGE.
<b>Sequence</b>	CEENDYTTWLAHSTDPGDYKDGCGILGYKEQFLRLRKSSVCQNGRDYVVAKQP SICPCSLEDFLCDFGYFRPENASECVEQPELKGHELEFCLYGKEEHLTTNGYR KIPGDRCCQGGMNPAREVKDLKKKCTSNFLNPKKQNSKSSS
<b>Research Area</b>	Others
<b>Source</b>	E.coli
<b>Target Names</b>	Sort1
<b>Expression Region</b>	610-754aa
<b>Notes</b>	Repeated freezing and thawing is not recommended. Store working aliquots at 4°C for up to one week.
<b>Tag Info</b>	N-terminal 6xHis-SUMO-tagged
<b>Mol. Weight</b>	32.5kDa
<b>Protein Length</b>	Partial
<b>Image</b>	



(Tris-Glycine gel) Discontinuous SDS-PAGE (reduced) with 5% enrichment gel and 15% separation gel.

### Reconstitution

We recommend that this vial be briefly centrifuged prior to opening to bring the contents to the bottom. Please reconstitute protein in deionized sterile water to a concentration of 0.1-1.0 mg/mL. We recommend to add 5-50% of glycerol (final concentration) and aliquot for long-term storage at -20°C/-80°C. Our default final concentration of glycerol is 50%. Customers could use it as reference.

### Shelf Life

The shelf life is related to many factors, storage state, buffer ingredients, storage temperature and the stability of the protein itself. Generally, the shelf life of liquid form is 6 months at -20°C/-80°C. The shelf life of lyophilized form is 12 months at -20°C/-80°C.