

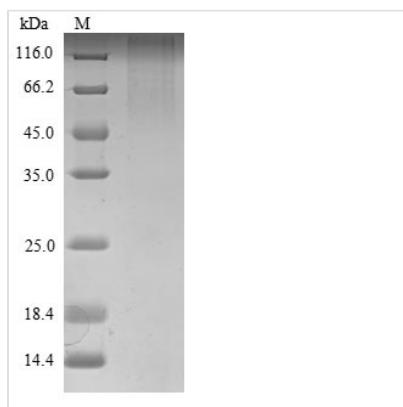


# Recombinant Mouse Roundabout homolog 1 (Robo1), partial

<b>Product Code</b>	CSB-YP020054MO
<b>Relevance</b>	Receptor for SLIT1 and SLIT2 that mediates cellular responses to molecular guidance cues in cellular migration, including axonal navigation at the ventral midline of the neural tube and projection of axons to different regions during neuronal development. Interaction with the intracellular domain of FLRT3 mediates axon attraction towards cells expressing NTN1. In axon growth cones, the silencing of the attractive effect of NTN1 by SLIT2 may require the formation of a ROBO1-DCC complex. Plays a role in the regulation of cell migration via its interaction with MYO9B; inhibits MYO9B-mediated stimulation of RHOA GTPase activity, and thereby leads to increased levels of active, GTP-bound RHOA. May be required for lung development
<b>Abbreviation</b>	Recombinant Mouse Robo1 protein, partial
<b>Storage</b>	The shelf life is related to many factors, storage state, buffer ingredients, storage temperature and the stability of the protein itself. Generally, the shelf life of liquid form is 6 months at -20°C/-80°C. The shelf life of lyophilized form is 12 months at -20°C/-80°C.
<b>Uniprot No.</b>	O89026
<b>Product Type</b>	Recombinant Protein
<b>Immunogen Species</b>	Mus musculus (Mouse)
<b>Purity</b>	≥ 90% as determined by SDS-PAGE.
<b>Sequence</b>	YRHRKKRNGLTSTYAGIRKVPSTFTPTVTYQRGGEAVSSGGRPGLLNISEPA TQPWLADTWPNTGNNHNDCSINCC TAGNGNSDSNLTTYSRPADCIANYNNQL DNKQTNLMLPESTVYGDVDLSNKINEMKTFNSPNLKDGRFVNPSGQPTPYAT TQLIQANLSNNMNGAGDSSEKHWKPPGQQKPEVAPIQYNIMEQNKLNDYR ANDTIPPTIPYNQSYDQNTGGSYNSSDRGSSTSGSQGHKKGARTPKAPKQGG MNWADLLPPPPAHPPPHSNSEEYNMSVDESVDQEMPCPVPPAPMYLQQDEL QEEEDERGPTPPVIRGAASSPAAVSYSHQSTATLTPSPQEELQPMQLQDCPEDL GHMPHPPDRRRQPVSPPPPPRPISPPHTYGYISGPLVSDMDTDAPEEEEEDEA DMEVAKMQTRRLRLRGLEQTPASSVGDLESSVTGSMINGWGSASEEDNISSG RSSVSSSDGSFFTDADFAQAVAAAAEYAGLKVARRQMQDAAGRHRHFHASQC PRPTSPVSTDSNMSAVVIQKARPAKKQKHQPGHLRREAYADDLPPPPVPPPAI KSPTVQSKAQLEVRPVMVPKLASIEARTDRSSDRKGGSYKGREALDGRQVTD LRTNPSPDREAQEQPNDGKGRGTRQPKRDLPPAKTHLGQEDILPYCRPTFPT SNNPRDPSSSSSMSSRGSRSRQREQANVGRRNMAEMQVLGGFERGDENNE ELEETES
<b>Research Area</b>	Cancer
<b>Source</b>	Yeast
<b>Target Names</b>	Robo1



<b>Protein Names</b>	Dutt1
<b>Expression Region</b>	880-1612aa
<b>Notes</b>	Repeated freezing and thawing is not recommended. Store working aliquots at 4°C for up to one week.
<b>Tag Info</b>	N-terminal 6xHis-tagged
<b>Mol. Weight</b>	82.0 kDa
<b>Protein Length</b>	Partial

**Image**


(Tris-Glycine gel) Discontinuous SDS-PAGE (reduced) with 5% enrichment gel and 15% separation gel.

**Reconstitution**

We recommend that this vial be briefly centrifuged prior to opening to bring the contents to the bottom. Please reconstitute protein in deionized sterile water to a concentration of 0.1-1.0 mg/mL. We recommend to add 5-50% of glycerol (final concentration) and aliquot for long-term storage at -20°C/-80°C. Our default final concentration of glycerol is 50%. Customers could use it as reference.

**Shelf Life**

The shelf life is related to many factors, storage state, buffer ingredients, storage temperature and the stability of the protein itself. Generally, the shelf life of liquid form is 6 months at -20°C/-80°C. The shelf life of lyophilized form is 12 months at -20°C/-80°C.